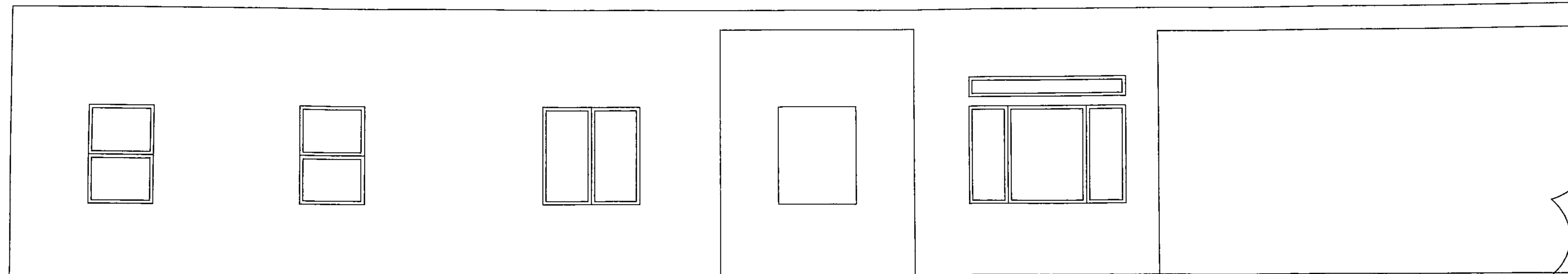
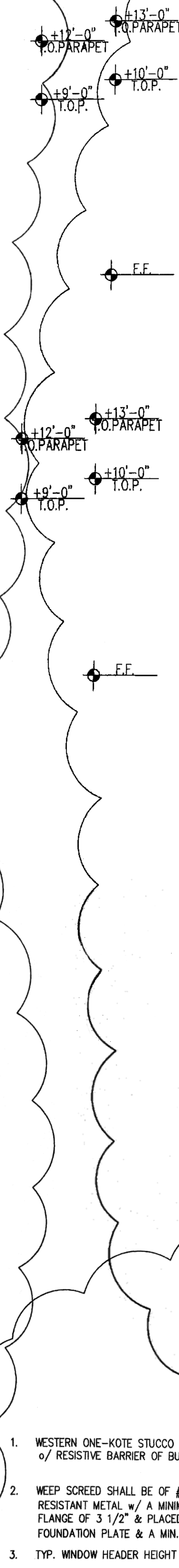


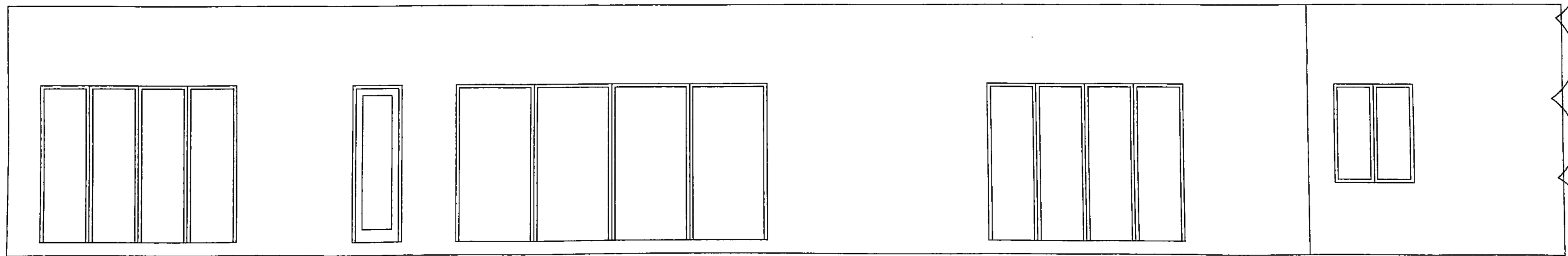
TABLE R602.3(1) FASTENER SCHEDULE FOR STRUCTURAL MEMBERS		
DESCRIPTION OF BUILDING ELEMENTS	NUMBER AND TYPE OF FASTENER (a,b,c,d)	SPACING OF FASTENERS
JOIST TO SILL OR GIRDER, TOE NAIL	3-8d (2 1/2" X 0.113")	-
1" x 6" SUBFLOOR OR LESS TO EACH JOIST, FACE NAIL	2-8d (2 1/2" X 0.113") 2 STAPLES, 1 1/4"	-
2" SUBFLOOR TO JOIST OR GIRDER, BLIND AND FACE NAIL	2-16d (3 1/2" X 0.135")	-
SOLE PLATE TO JOIST OR BLOCKING, FACE NAIL	16d (3 1/2" X 0.135")	16" O.C.
TOP OR SOLE PLATE TO STUD, END NAIL	2-16d (3 1/2" X 0.135")	-
STUD TO SOLE PLATE, TOE NAIL	3-8d (2 1/2" X 0.113") OR 2-16d (3 1/2" X 0.135")	-
DOUBLE STUDS, FACE NAIL	10d (3" X 0.128")	24" O.C.
DOUBLE TOP PLATES, FACE NAIL	10d (3" X 0.128")	24" O.C.
SOLE PLATE TO JOIST OR BLOCKING AT BRACED WALL PANELS	3-16d (3 1/2" X 0.135")	16" O.C.
DOUBLE TOP PLATES, MINIMUM 24-INCH OFFSET OF END JOINTS, FACE NAIL IN LAPPED AREA	8-16d (3 1/2" X 0.135")	-
BLOCKING BETWEEN JOISTS OR RAFTERS TO TOP PLATE, TOE NAIL	3-8d (2 1/2" X 0.113")	-
RIM JOIST TO TOP PLATE, TOE NAIL	8d (2 1/2" X 0.113")	6" O.C.
TOP PLATES, LAPS OF CORNERS AND INTERSECTIONS, FACE NAIL	2-10d (3" X 0.128")	-
BUILT-UP HEADER, TWO PIECES WITH 1/2" SPACER	16d (3 1/2" X 0.135")	16" O.C. ALONG EACH EDGE
CONTINUED HEADER, TWO PIECES	16d (3 1/2" X 0.135")	16" O.C. ALONG EACH EDGE
CEILING JOISTS TO PLATE, TOE NAIL	3-8d (2 1/2" X 0.113")	-
CONTINUOUS HEADER TO STUD, TOE NAIL	4-8d (2 1/2" X 0.113")	-
CEILING JOISTS, LAPS OVER PARTITIONS, FACE NAIL	3-10d (3" X 0.128")	-
CEILING JOIST TO PARALLEL RAFTERS, FACE NAIL	3-10d (3" X 0.128")	-
RAFTER TO PLATE, TOE NAIL	2-16d (3 1/2" X 0.135")	-
1" BRACE TO EACH STUD AND PLATE, FACE NAIL	2-8d (2 1/2" X 0.113") 2 STAPLES, 1 1/4"	-
1" x 6" SHEATHING TO EACH BEARING, FACE NAIL	2-8d (2 1/2" X 0.113") 2 STAPLES, 1 1/4"	-
1" x 8" SHEATHING TO EACH BEARING, FACE NAIL	2-8d (2 1/2" X 0.113") 3 STAPLES, 1 1/4"	-
WIDER THAN 1" x 8" SHEATHING TO EACH BEARING, FACE NAIL	3-8d (2 1/2" X 0.113") 4 STAPLES, 1 1/4"	-
BUILT-UP CORNERS STUDS	10d (3" X 0.128")	24" O.C.
BUILT-UP GIRDERS AND BEAMS, 2-INCH LUMBER LAYERS	10d (3" X 0.128")	NAIL EACH LAYER AS FOLLOWS: 32" O.C. AT TOP AND BOTTOM AND STAGGERED. TWO NAILS AT ENDS AND AT EACH SPLICE.
2" PLANKS	2-16d (3 1/2" X 0.135")	AT EACH BEARING
ROOF RAFTERS TO RIDGE, VALLEY OR HP RAFTERS TOE NAIL FACE NAIL	4-16d (3 1/2" X 0.135") 3-16d (3 1/2" X 0.135")	-
RAFTER TIES TO RAFTERS, FACE NAIL	3-8d (2 1/2" X 0.113")	-
COLLAR TIE TO RAFTER, FACE NAIL, OR 1/4" X 3/8" GAGE RIDGE STRAP	3-10d (3" X 0.128")	-

TABLE R602.3(1) - CONTINUED FASTENER SCHEDULE FOR STRUCTURAL MEMBERS			
DESCRIPTION OF BUILDING MATERIALS	DESCRIPTION OF FASTENERS (d,c,d,e)	SPACING OF FASTENERS	
		EDGES (INCHES)	INTERMEDIATE SUPPORTS (c,e) (INCHES)
WOOD STRUCTURAL PANELS, SUBFLOOR, ROOF AND WALL SHEATHING TO FRAMING, AND PARTICLEBOARD WALL SHEATHING TO FRAMING			
3/4" - 1"	6d COMMON NAIL (SUBFLOOR, WALL) 8d COMMON NAIL (ROOF(T))	6	12 (g)
3/8" - 1"	8d COMMON NAIL	6	12 (g)
1/2" - 1 1/4"	10d COMMON NAIL OR 8d DEFORMED NAIL	6	12
OTHER WALL SHEATHING (h)			
1/2" REGULAR CELLULOSIC FIBERBOARD SHEATHING	1 1/2" GALVANIZED ROOFING NAIL 6d COMMON NAIL STAPLE 16 ga., 1 1/2" LONG	3	6
3/8" STRUCTURAL CELLULOSIC FIBERBOARD SHEATHING	1 1/2" GALVANIZED ROOFING NAIL 6d COMMON NAIL STAPLE 16 ga., 1 1/2" LONG	3	6
3/8" STRUCTURAL CELLULOSIC FIBERBOARD SHEATHING	1 1/2" GALVANIZED ROOFING NAIL 6d COMMON NAIL STAPLE 16 ga., 1 1/2" LONG	3	6
1/2" GYPSUM SHEATHING	1 1/2" GALVANIZED ROOFING NAIL; 6d COMMON NAIL; STAPLE GALVANIZED, 1 1/2" LONG, 1 1/2" SCREWS, TYPE W OR S	4	8
1/2" GYPSUM SHEATHING	1 1/2" GALVANIZED ROOFING NAIL; 8d COMMON NAIL; STAPLE GALVANIZED, 1 1/2" LONG, 1 1/2" SCREWS, TYPE W OR S	4	8
WOOD STRUCTURAL PANELS, COMBINATION SUBFLOOR UNDERLAYMENT TO FRAMING			
3/4" OR LESS	6d DEFORMED NAIL OR 8d COMMON NAIL	6	12
1/2" - 1"	8d COMMON NAIL OR 6d DEFORMED NAIL	6	12
1/4" - 1 1/4"	10d COMMON NAIL OR 8d DEFORMED NAIL	6	12

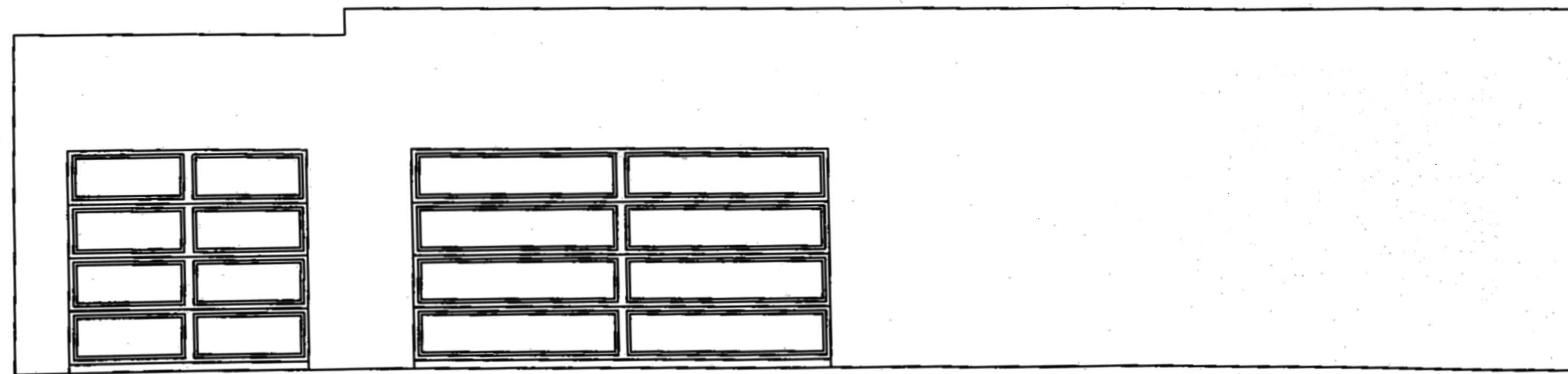
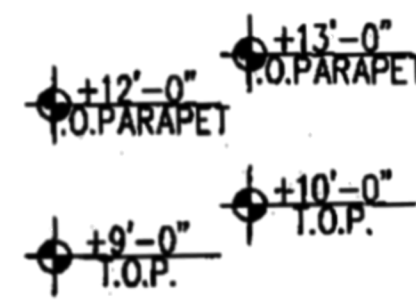
FOR SI: 1 INCH = 25.4 mm, 1 FOOT = 304.8 mm, 1 MILE PER HOUR = 1.609 km/h
 c. ALL NAILS ARE SHOOTING COMMON, BOX OR DEFORMED SHANKS EXCEPT WHERE OTHERWISE STATED. NAILS USED FOR FRAMING AND SHEATHING CONNECTIONS SHALL HAVE MINIMUM AVERAGE YIELD STRENGTHS AS SHOWN: 80 ksi (551 MPa) FOR SHANK DIAMETER OF 0.192 INCH (20d COMMON NAIL), 80 ksi (551 MPa) FOR SHANK DIAMETERS LARGER THAN 0.142 INCH BUT NOT LARGER THAN 0.177 INCH, AND 100 ksi (689 MPa) FOR SHANK DIAMETERS OF 0.142 INCH OR LESS.
 d. STAPLES ARE 16 GAGE WIRE AND HAVE A MINIMUM 3/4" ON DIAMETER CROWN WIDTH.
 e. NAILS SHALL BE SPACED AT NO MORE THAN 6" O.C. AT ALL SUPPORTS WHERE SPANS ARE 48" OR GREATER.
 f. 4" X 8" OR 4" X 10" X 9'-0" PANELS SHALL BE APPLIED VERTICALLY.
 g. SPACING OF FASTENERS NOT INCLUDED IN THIS TABLE SHALL BE BASED ON TABLE R602.3(2).
 h. FOR REGIONS HAVING BASIC WIND SPEEDS OF 110 MPH OR GREATER, 8d DEFORMED NAILS SHALL BE USED FOR ATTACHING PLYWOOD AND WOOD STRUCTURAL PANEL, ROOF SHEATHING TO FRAMING WITHIN MINIMUM 48" DISTANCE FROM GABLE END WALLS, IF MEAN ROOF HEIGHT IS MORE THAN 25 FEET, UP TO 35 FEET MAXIMUM.
 i. FOR REGIONS HAVING BASIC WIND SPEEDS OF 100 MPH OR LESS, NAILS FOR ATTACHING WOOD STRUCTURAL PANEL ROOF SHEATHING TO GABLE END WALL FRAMING SHALL BE SPACED 6" O.C. WHEN BASIC WIND SPEED IS GREATER THAN 100 MPH, NAILS FOR ATTACHING PANEL ROOF SHEATHING TO INTERMEDIATE SUPPORTS SHALL BE SPACED 8" O.C. FOR MINIMUM 48" DISTANCE FROM RIDGES, EAVES AND GABLE END WALL FRAMING.
 j. GYPSUM SHEATHING SHALL CONFORM TO ASTM C 79 AND SHALL BE INSTALLED IN ACCORDANCE WITH GA 253. FIBERBOARD SHEATHING SHALL CONFORM TO EITHER AIA 194.1 OR ASTM C 208.
 k. SPACING OF FASTENERS ON FLOOR SHEATHING PANEL EDGES APPLIES TO PANEL EDGES SUPPORTED BY FRAMING MEMBERS AND AT ALL FLOOR PERIMETERS ONLY. SPACING OF FASTENERS ON ROOF SHEATHING PANEL EDGES APPLIES TO PANEL EDGES SUPPORTED BY FRAMING MEMBERS AND AT ALL ROOF PLANE PERIMETERS. BLOCKING OF ROOF OR FLOOR SHEATHING PANEL EDGES PERPENDICULAR TO THE FRAMING MEMBERS SHALL NOT BE REQUIRED EXCEPT AT INTERSECTION OF ADJACENT ROOF PLANES. FLOOR AND ROOF PERIMETER SHALL BE SUPPORTED BY FRAMING MEMBERS OR SLID BLOCKING.



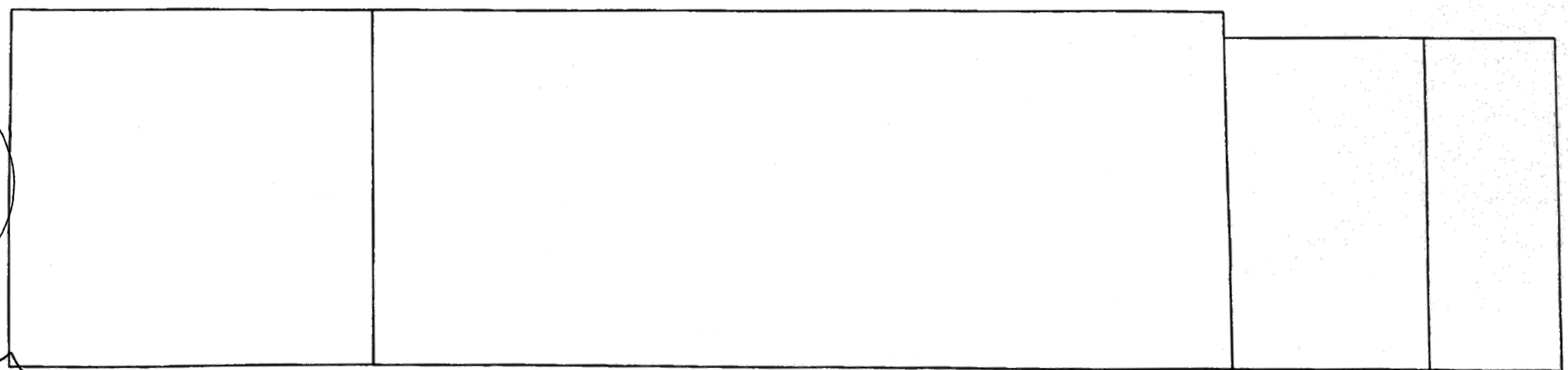
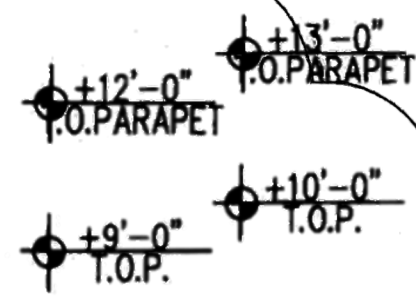
FRONT ELEVATION
SCALE 1/4" = 1'-0"



REAR ELEVATION
SCALE 1/4" = 1'-0"



WEST ELEVATION
SCALE 1/4" = 1'-0"



EAST ELEVATION
SCALE 1/4" = 1'-0"

- WESTERN ONE-KOTE STUCCO WALL FINISH (TAPMO ER 382)
o/ RESISTIVE BARRIER OF BUILDING WRAP
- WEEP SCREED SHALL BE OF #26 GAUGE CORROSION-RESISTANT METAL w/ A MINIMUM VERTICAL ATTACHMENT FLANGE OF 3 1/2" & PLACED A MINIMUM OF 3/4" BELOW FOUNDATION PLATE & A MIN. 6" A.F.G. @ ALL EXT. WALLS.
- TYP. WINDOW HEADER HEIGHT IS 8'-0" A.F.F.
- ROOFING IS MODIFIED BITUMEN ICC ES 1274

CORNERSTONE
DESIGN
MESA, ARIZONA
PHONE: (602) 695-5324
E-MAIL: rts52@msn.com

CACTUS ADDITION/REMODEL
8417 E. CACTUS ROAD
SCOTTSDALE, ARIZONA 85260

ELEVATIONS

REVISIONS

DATE: 03/05/20

DRAWN BY:

CHKD BY:

JOB #:

STA. PLAN:

DRAWING NO.:

A-6

SHT 6 OF 7

APPROVED
FINAL PLANS PLANNING
3-30-2016
DATE: 3-30-2016
APPROVED BY: [Signature]