

CHAS. ROBERTS AIR CONDITIONING, INC.
9828 N. 19th AVENUE PHOENIX, ARIZONA 85021
943-7291

BUILDER: republic PLAN: 1125 DATE: 06-29-99

SENSIBLE	20728	
LATENT	920	
TOTALS	21648	17238

EQUIPMENT SELECTION

GAS/ELECTRIC

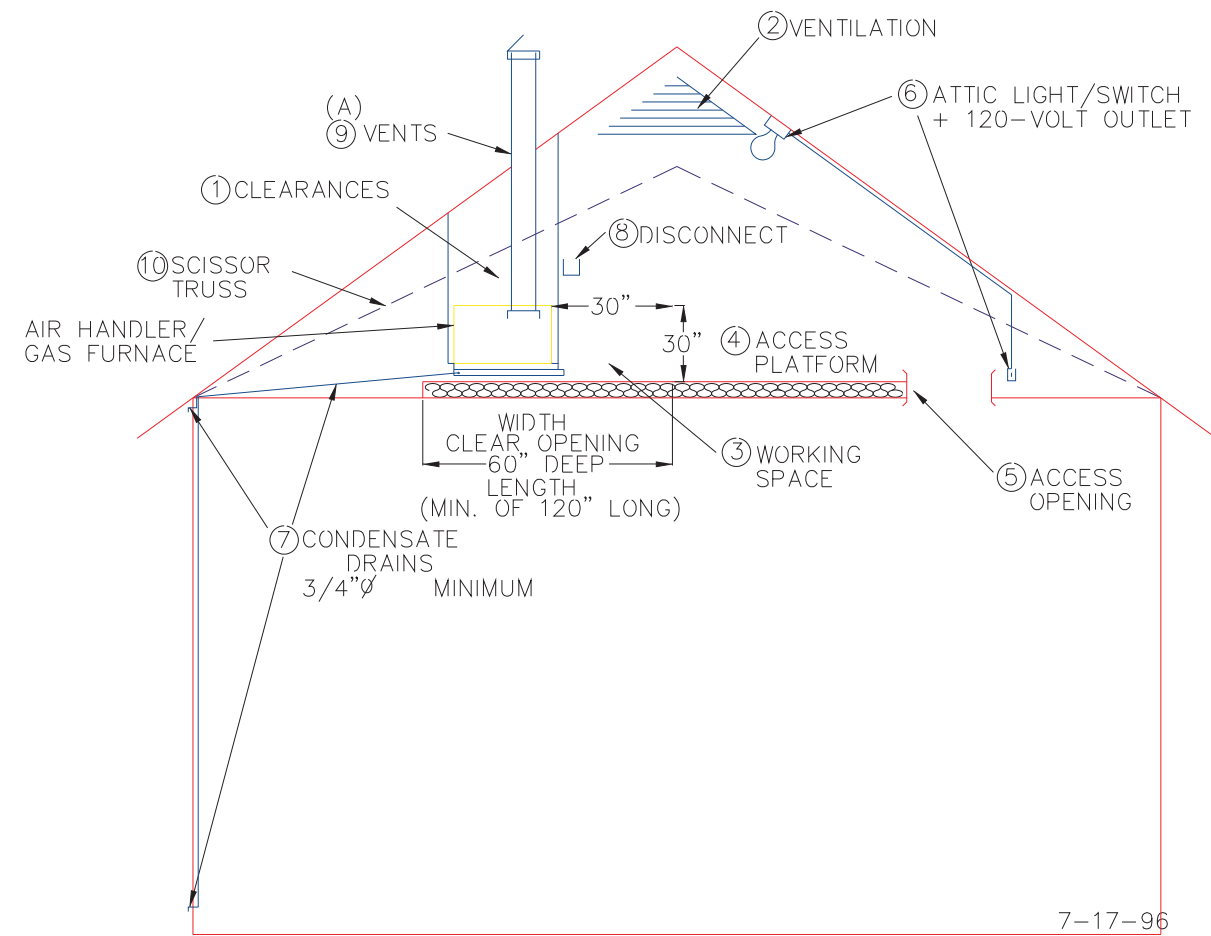
UNIT A - GOODMAN 3 TON GAS/ELECTRIC SPLIT AIR CONDITIONING SYSTEM
MODEL CK36-1(OUTDOOR)/H-36(COIL)/GMPH075-4(GAS FURNACE)
33000 BTU/H COOLING 50000 BTU/H HEATING
RATED @ ARI CONDITIONS FLA. 17.5/6.1

HOODS - ROUGH-IN EXHAUST FANS - EF-1 = AIRO 650
EF-2 = AIRO 2510
REGISTERS - RRAC 800-50/150 R/A GRILLES - RRAC 50GH-5FF

DESIGN CONDITIONS

WINTER SUMMER
OUTSIDE TEMPERATURE 34 DB OUTSIDE TEMPERATURE 110 DB - 71 WB
INSIDE TEMPERATURE 74 DB INSIDE TEMPERATURE 78 DB - 63 WB

LOAD CALCULATED IN ACCORDANCE WITH AIR CONDITIONING
CONTRACTORS OF AMERICAN MANUAL J 7TH EDITION

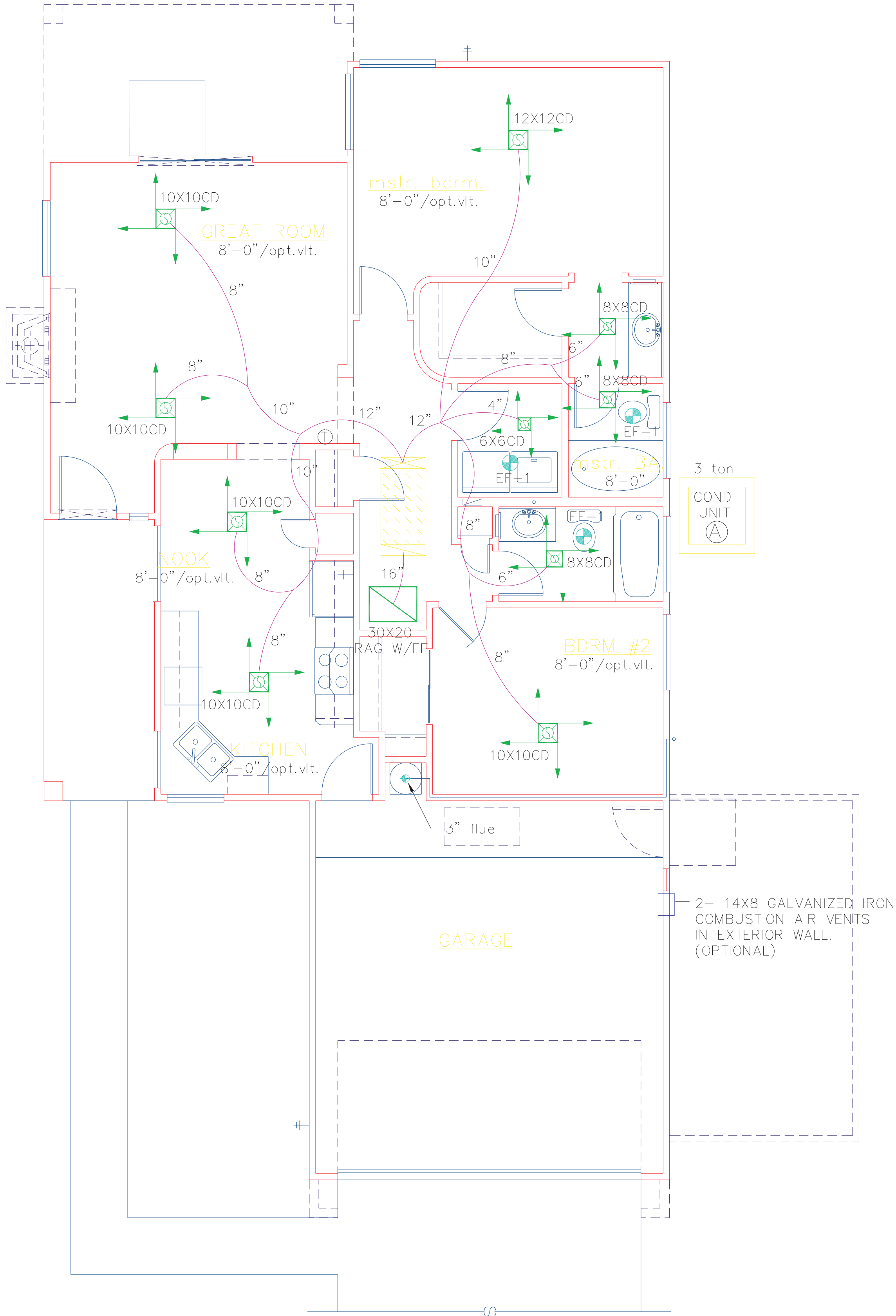


REQUIREMENTS FOR ATTIC AIR HANDLER OR GAS FURNACE

- CLEARANCES FROM COMBUSTABLE MATERIALS FOR GAS FIRED FURNACES MUST BE AS SPECIFIED IN THE MANUFACTURER'S INSTALLATION INSTRUCTIONS AND APPLICABLE LOCAL BUILDING CODES. (A)
- VENTILATION - THE NET Free VENTILATION AREA SHALL NOT BE LESS THAN 1/150 of the area OF THE SPACE VENTILATED.
EXCEPTIONS: THE AREA MAY BE 1/300 OF THE AREA OF THE SPACE VENTILATED PROVIDED 50 PERCENT OF THE REQUIRED VENTILATING AREA IS PROVIDED BY VENTILATORS LOCATED IN THE UPPER PORTION OF THE SPACE VENTILATED AT LEAST 3 FEET ABOVE EAVE OR CORNICE VENTS WITH THE BALANCE OF THE REQUIRED VENTILATION PROVIDED BY EAVE OR CORNICE VENTS.
* REQUIRED ATTIC VENTILATION EXCEEDS REQUIREMENTS FOR FURNACE COMBUSTION AIR. (A)
- WORKING SPACE - A WORKING PLATFORM must NOT BE LESS THAN 30 inches in depth FOR THE ENTIRE SERVICE SIDE OF THE FURNACE WITH A minimum height of 30 inches head clearance.
- access platform - the access platform must be a minimum of 24 inches wide continuous floor not more than 20 feet in length unless the entire AIR HANDLER/furnace can be serviced from the attic access opening.
* make provisions for proper insulation to be installed under the platforms when required.
- access opening - attic openings and passageways to the AIR HANDLER/furnace must be 30 INCHES X 30 INCHES.
exception: the access opening into the space may be 22 inches by 30 inches provided the largest piece of equipment can be removed through this opening.
- attic light - a permanent 120-volt receptical outlet and lighting fixture controlled by a switch located at the required passage way opening shall be provided at or near the AIR HANDLER/furnace.
- condensate drains - a secondary drain pan must be installed under the coil section to prevent damage to the ceiling below. the secondary drain must be installed with a minimum grade of 1/8 inch per 12 inches of horizontal run and must exit to the outside where it can be readily visible.
- disconnect - a positive means of electrical disconnect must be located at or near the AIR HANDLER/furnace.
- vents- type b vent, size per furnace manufactures specifications.
vents must terminate in accordance to u.m.c. requirements provided they are at least 8 feet from any vertical wall of 45 DEGREES or more and terminate not less than 2 feet higher than the highest point they pass through. (A)
- if furnace is located below scissor truss the recommend insulating procedure is along ceiling LINE below the furnace not along scissor above to provide proper combustion AIR with out COMPROMISING the integrity of the thermal envelope by penetrating it with combustion ducts. (A)
the specifications above meet the minimum requirements established in the 1988, 1991, 1994 u.b.c and u.m.c. manuals.

(A) - APPLIES TO GAS FURNACE ONLY.

11-4-96



MECHANICAL PLAN

SCALE: 1/4" = 1'-0"

note: duct layout, equipment style, and fan locations may vary to conform to local codes or actual field conditions and builders options. duct layout is schematic. ductwork to be sheetmetal or manufactured flex as space dictates.

MECHANICAL PLAN

SHEET CONTENT:

PROJECT NO.: RH99-0504

DRAWN BY: DRAFTER

DATE: 12 JULY 99

REVISIONS

Rev.	DATE:
1	
2	
3	
4	

PLAN

1125

SHEET

M-1

The Tektone Company
Architectural Drafting Services
8221 E. Corabell Cir., Mesa, AZ 85208
PH. (602) 357-1858 FAX (602) 357-6457

REPUBLIC HOMES, L.L.C.
25 N. GILBERT RD., SUITE 104
GILBERT, AZ 85234
PH. (480) 539-6485 FAX (480) 539-6457