

CHAS. ROBERTS AIR CONDITIONING, INC. 9828 N. 19th AVENUE PHOENIX, ARIZONA 85021 943-7291			
BUILDER:	republic	PLAN:	2783
		DATE:	07-21-99
SENSIBLE	43969		
LATENT	2300		
TOTALS	46269		39749

EQUIPMENT SELECTION

UNIT A - GOODMAN 3 TON GAS/ELECTRIC SPLIT AIR CONDITIONING SYSTEM  
MODEL CK36-1(OUTDOOR)/H-36(COIL)/GMPH075-4(GAS FURNACE)  
33000 BTU/H COOLING 50000 BTU/H HEATING  
RATED @ ARI CONDITIONS FLA. 17.5/6.1

UNIT B - GOODMAN 3.5 TON GAS/ELECTRIC SPLIT AIR CONDITIONING SYSTEM  
MODEL CK42-1(OUTDOOR)/H-49(COIL)/GMPH075-4(GAS FURNACE)  
39500 BTU/H COOLING 75000 BTU/H HEATING  
RATED @ ARI CONDITIONS FLA. 21.1/8.2

HOODS - ROUGH-IN EXHAUST FANS - EF-1 = AIRO 650  
EF-2 = AIRO 2510

REGISTERS - RRAC 800-50/150 R/A GRILLES - RRAC 50GH-5FF

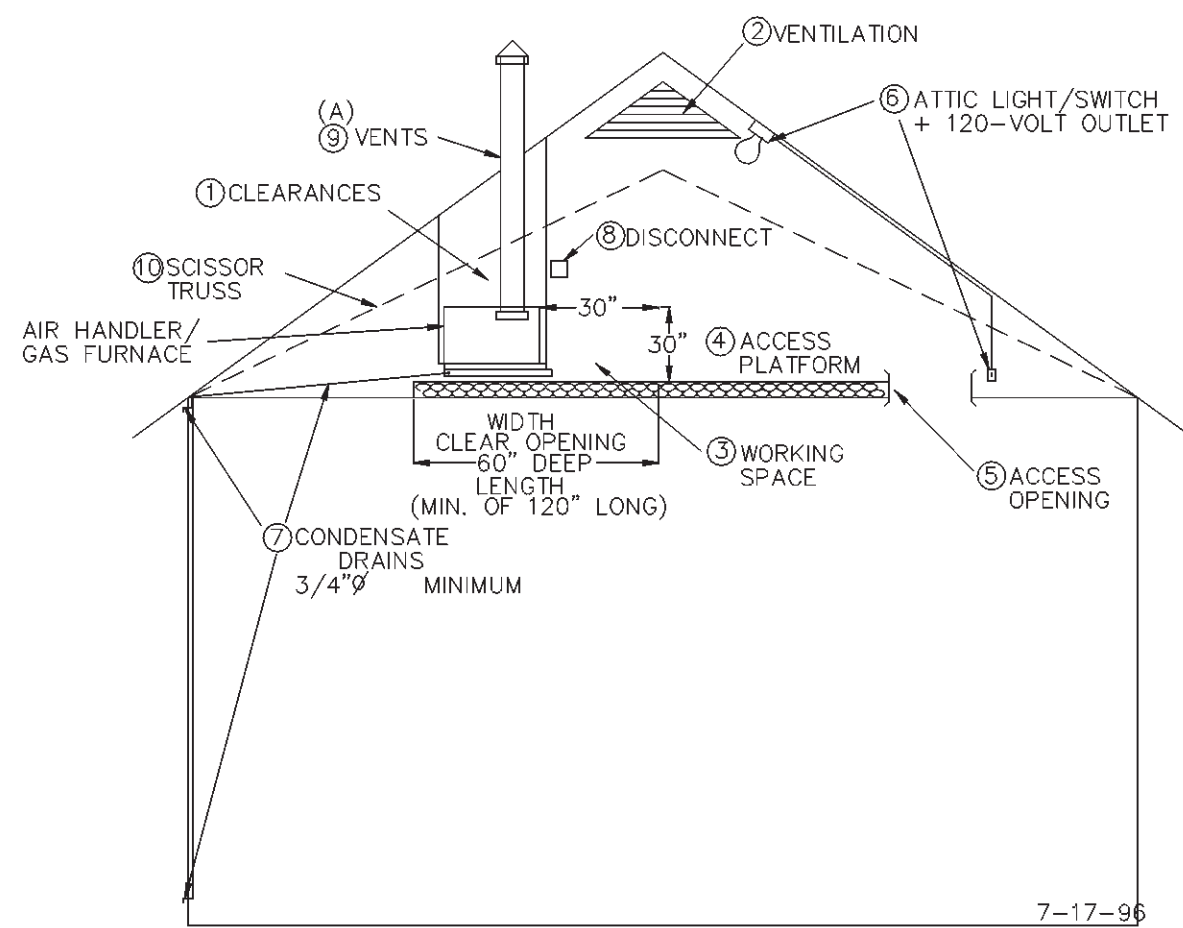
DESIGN CONDITIONS

WINTER SUMMER

OUTSIDE TEMPERATURE 34 DB OUTSIDE TEMPERATURE 110 DB - 71 WB

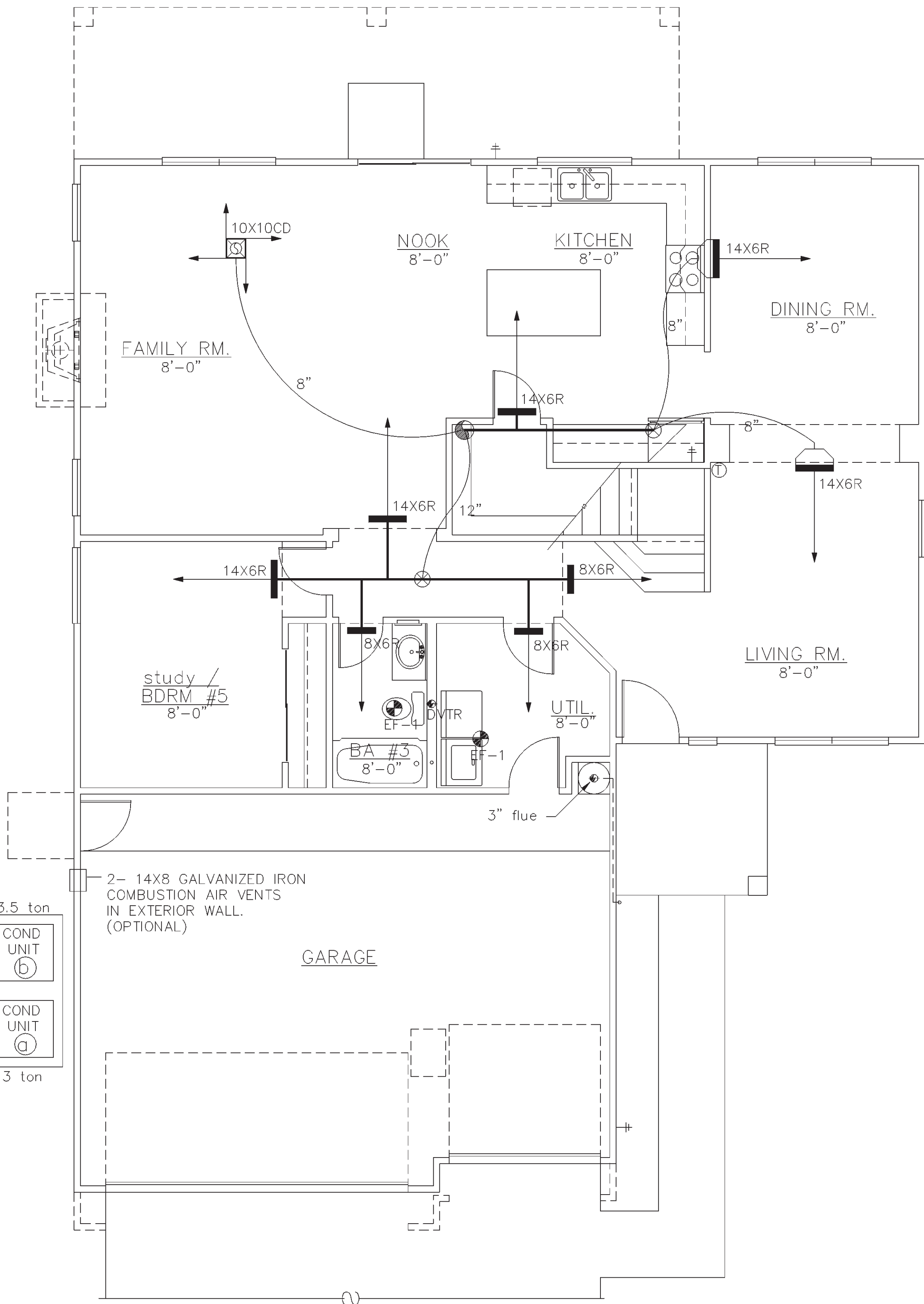
INSIDE TEMPERATURE 74 DB INSIDE TEMPERATURE 78 DB - 63 WB

LOAD CALCULATED IN ACCORDANCE WITH AIR CONDITIONING CONTRACTORS OF AMERICAN MANUAL J 7TH EDITION



- REQUIREMENTS FOR ATTIC AIR HANDLER OR GAS FURNACE
- CLEARANCES FROM COMBUSTIBLE MATERIALS FOR GAS FIRED FURNACES MUST BE AS SPECIFIED IN THE MANUFACTURER'S INSTALLATION INSTRUCTIONS AND APPLICABLE LOCAL BUILDING CODES. (A)
  - VENTILATION - THE NET FREE VENTILATION AREA SHALL NOT BE LESS THAN 1/150 OF THE AREA OF THE SPACE VENTILATED.  
EXCEPTIONS: THE AREA MAY BE 1/300 OF THE AREA OF THE SPACE VENTILATED PROVIDED 50 PERCENT OF THE REQUIRED VENTILATING AREA IS PROVIDED BY VENTILATORS LOCATED IN THE UPPER PORTION OF THE SPACE VENTILATED AT LEAST 3 FEET ABOVE EAVE OR CORNICE VENTS WITH THE BALANCE OF THE REQUIRED VENTILATION PROVIDED BY EAVE OR CORNICE VENTS.  
\* REQUIRED ATTIC VENTILATION EXCEEDS REQUIREMENTS FOR FURNACE COMBUSTION AIR. (A)
  - WORKING SPACE - A WORKING PLATFORM must NOT BE LESS THAN 30 inches in depth FOR THE ENTIRE SERVICE SIDE OF THE FURNACE WITH A minimum height of 30 inches head clearance.
  - access platform - the access platform must be a minimum of 24 inches wide continuous floor not more than 20 feet in length unless the entire AIR HANDLER/furnace can be serviced from the attic access opening.  
\* make provisions for proper insulation to be installed under the platforms when required.
  - access opening - attic openings and passageways to the AIR HANDLER/furnace must be 30 INCHES X 30 INCHES.  
exception: the access opening into the space may be 22 inches by 30 inches provided the largest piece of equipment can be removed through this opening.
  - attic light - a permanent 120-volt receptical outlet and lighting fixture controlled by a switch located at the required passage way opening shall be provided at or near the AIR HANDLER/furnace.
  - condensate drains - a secondary drain pan must be installed under the coil section to prevent damage to the ceiling below. the secondary drain must be installed with a minimum grade of 1/8 inch per 12 inches of horizontal run and must exit to the outside where it can be readily visible.
  - disconnect - a positive means of electrical disconnect must be located at or near the AIR HANDLER/furnace.
  - vents- type b vent, size per furnace manufactures specifications.  
vents must terminate in accordance to u.m.c. requirements provided they are at least 8 feet from any vertical wall of 45 DEGREES or more and terminate not less that 2 feet higher than the highest point they pass through. (A)
  - if furnace is located below scissor truss the recommend insulating procedure is along ceiling LINE below the furnace not along scissor above to provide proper combustion AIR with out COMPROMISING the integrity of the thermal envelope by penetrating it with combustion ducts. (A)  
the specifications above meet the minimum requirements established in the 1988, 1991, 1994 u.b.c and u.m.c. manuals.  
(A) - APPLIES TO GAS FURNACE ONLY.

11-4-96



FIRST FLOOR MECHANICAL PLAN  
SCALE: 1/4" = 1'-0"

REPUBLIC HOMES, L.L.C.  
825 N. GILBERT RD., SUITE 104  
GILBERT, AZ 85234  
PH. (480) 539-6485 FAX (480) 539-6485

The Tektone Company  
Architectural Drafting Services  
8221 E. Corabell Cir., Mesa, AZ 85208  
PH. (602) 357-1858 FAX (602) 357-1858

MECHANICAL  
SHEET CONTENT:

PROJECT NO.:	
RH99-0504	
DRAWN BY:	
S. PREUSS	
DATE: 10 AUG 99	
REVISIONS	
Rev.	DATE:
1	
2	
3	
4	

PLAN  
2783

SHEET  
M-1