

CHAS. ROBERTS AIR CONDITIONING, INC.  
9828 N. 19th AVENUE PHOENIX, ARIZONA 85021  
943-7291

BUILDER: windamere homes      PLAN: 3407      DATE: 04-07-99

SENSIBLE	23857	
LATENT	920	
TOTALS	24777	17526

EQUIPMENT SELECTION

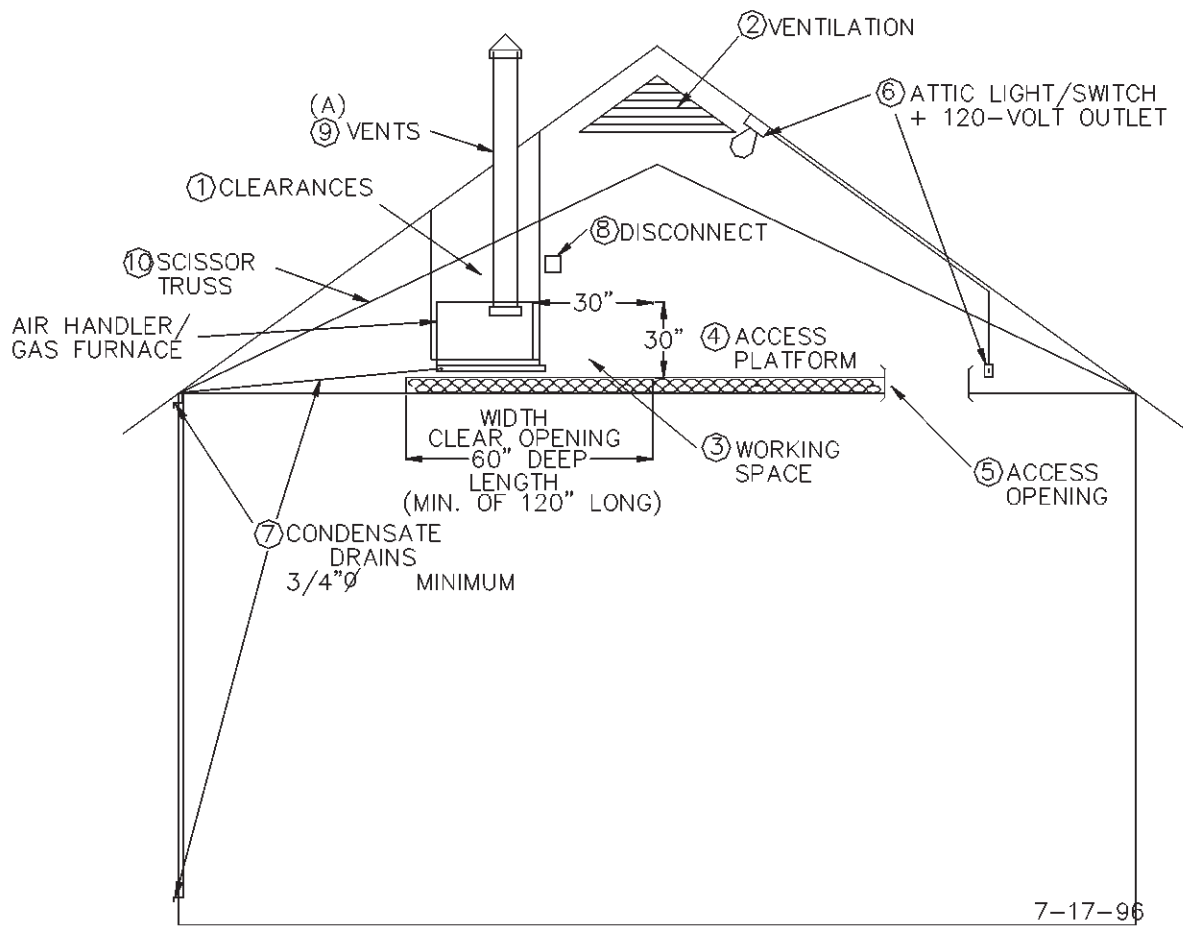
UNIT A - GOODMAN 3 TON GAS/ELECTRIC SPLIT AIR CONDITIONING SYSTEM  
MODEL CK36-1(OUTDOOR)/H-36(COIL)/GMPH075-4(GAS FURNACE)  
33000 BTU/H COOLING      50000 BTU/H HEATING  
RATED @ ARI CONDITIONS      FLA. 17.5/6.1

HOODS - ROUGH-IN      EXHAUST FANS - EF-1 = AIRO 650  
EF-2 = AIRO 2510  
REGISTERS - RRAC 800-50/150      R/A GRILLES - RRAC 50GH-5FF

DESIGN CONDITIONS

WINTER	SUMMER
OUTSIDE TEMPERATURE 34 DB	OUTSIDE TEMPERATURE 110 DB - 71 WB
INSIDE TEMPERATURE 74 DB	INSIDE TEMPERATURE 78 DB - 63 WB

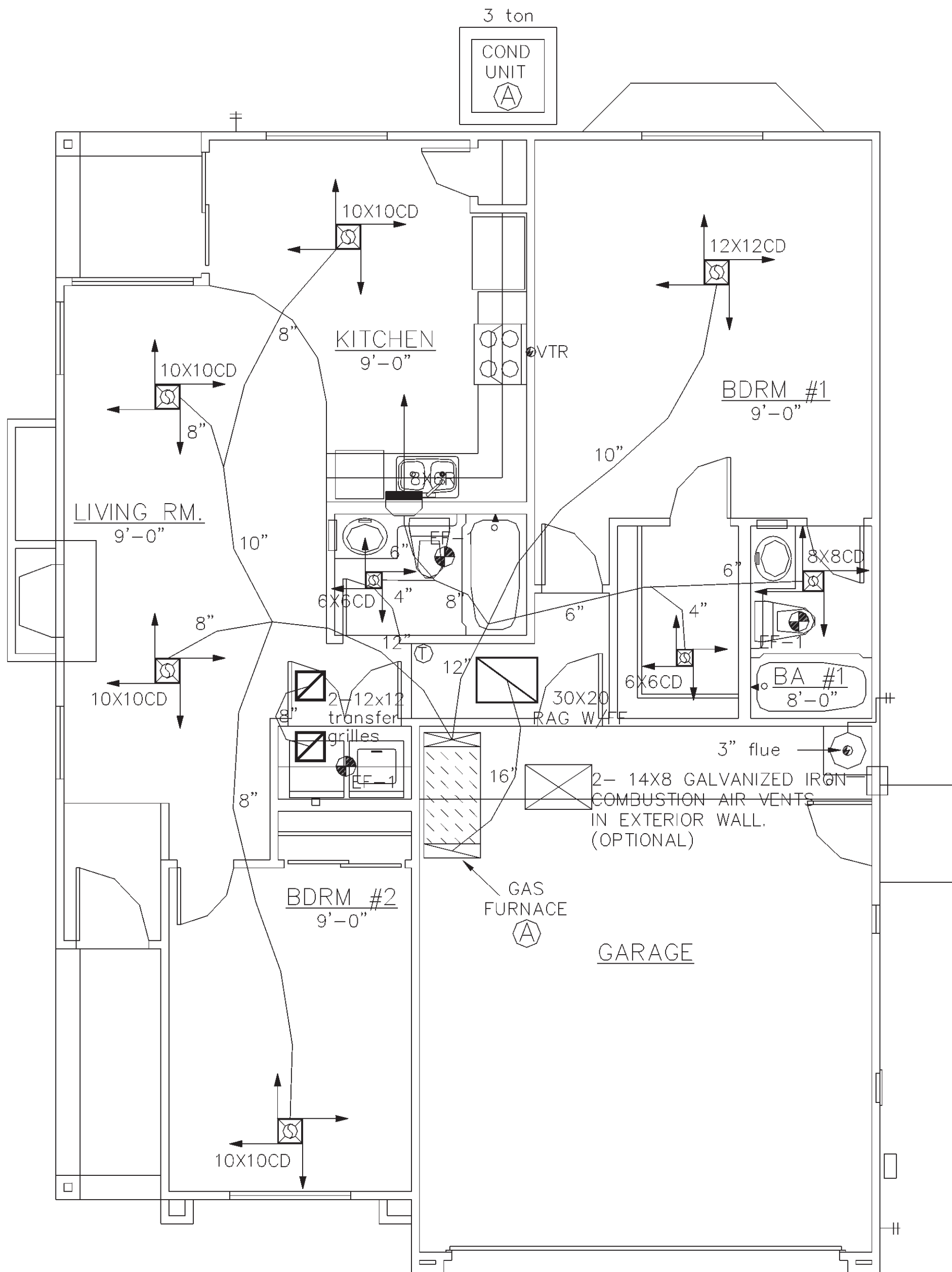
LOAD CALCULATED IN ACCORDANCE WITH AIR CONDITIONING  
CONTRACTORS OF AMERICAN MANUAL J 7TH EDITION



REQUIREMENTS FOR ATTIC AIR HANDLER OR GAS FURNACE

- CLEARANCES FROM COMBUSTABLE MATERIALS FOR GAS FIRED FURNACES MUST BE AS SPECIFIED IN THE MANUFACTURER'S INSTALLATION INSTRUCTIONS AND APPLICABLE LOCAL BUILDING CODES. (A)
- VENTILATION - THE NET Free VENTILATION AREA SHALL NOT BE LESS THAN 1/150 OF THE AREA OF THE SPACE VENTILATED.  
EXCEPTIONS: THE AREA MAY BE 1/300 OF THE AREA OF THE SPACE VENTILATED PROVIDED 50 PERCENT OF THE REQUIRED VENTILATING AREA IS PROVIDED BY VENTILATORS LOCATED IN THE UPPER PORTION OF THE SPACE VENTILATED AT LEAST 3 FEET ABOVE EAVE OR CORNICE VENTS WITH THE BALANCE OF THE REQUIRED VENTILATION PROVIDED BY EAVE OR CORNICE VENTS.  
\* REQUIRED ATTIC VENTILATION EXCEEDS REQUIREMENTS FOR FURNACE COMBUSTION AIR. (A)
- WORKING SPACE - A WORKING PLATFORM must NOT BE LESS THAN 30 inches in depth FOR THE ENTIRE SERVICE SIDE OF THE FURNACE WITH A minimum height of 30 inches head clearance.
- access platform - the access platform must be a minimum of 24 inches wide continuous floor not more than 20 feet in length unless the entire AIR HANDLER/furnace can be serviced from the attic access opening.  
\* make provisions for proper insulation to be installed under the platforms when required.
- access opening - attic openings and passageways to the AIR HANDLER/furnace must be 30 INCHES X 30 INCHES.  
exception: the access opening into the space may be 22 inches by 30 inches provided the largest piece of equipment can be removed through this opening.
- attic light - a permanent 120-volt receptical outlet and lighting fixture controlled by a switch located at the required passage way opening shall be provided at or near the AIR HANDLER/furnace.
- condensate drains - a secondary drain pan must be installed under the coil section to prevent damage to the ceiling below. the secondary drain must be installed with a minimum grade of 1/8 inch per 12 inches of horizontal run and must exit to the outside where it can be readily visible.
- disconnect - a positive means of electrical disconnect must be located at or near the AIR HANDLER/furnace.
- vents- type b vent, size per furnace manufactures specifications.  
vents must terminate in accordance to u.m.c. requirements provided they are at least 8 feet from any vertical wall of 45 DEGREES or more and terminate not less that 2 feet higher than the highest point they pass through. (A)
- if furnace is located below scissor truss the recommend insulating procedure is along ceiling LINE below the furnace not along scissor above to provide proper combustion AIR with out COMPROMISING the integrity of the thermal envelope by penetrating it with combustion ducts. (A)  
the specifications above meet the minimum requirements established in the 1988, 1991, 1994 u.b.c and u.m.c. manuals.  
(A) - APPLIES TO GAS FURNACE ONLY.

11-4-96



REPUBLIC HOMES, L.L.C.  
1845 S. DOBSON ROAD, SUITE 101  
MESA, AZ 85202  
PH. (480) 775-7273 FAX (480) 775-7278

[i] PLAN  
4710 E. Falcon Dr. Suite 111  
Mesa, AZ 85215  
(602) 807-1539 (602) 807-1553

MECHANICAL PLAN  
SHEET CONTENT:

PROJECT NO.:	
RH99-1018	
DRAWN BY:	
PLAN	
DATE: 19 OCT 99	
REVISIONS	
Rev.	DATE:
1	
2	
3	
4	

PLAN  
1045

SHEET  
M-1