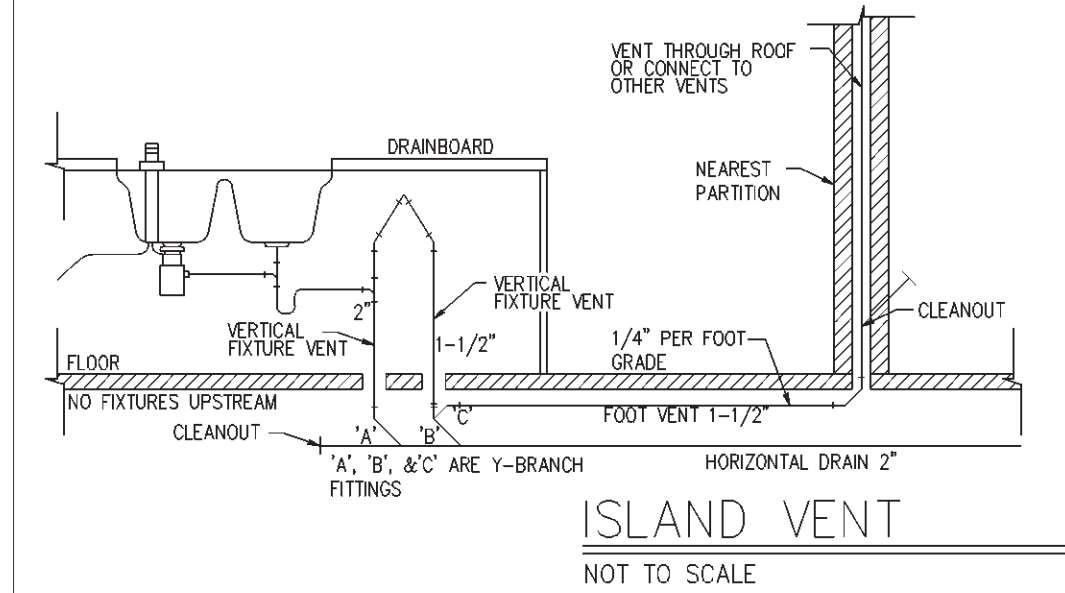


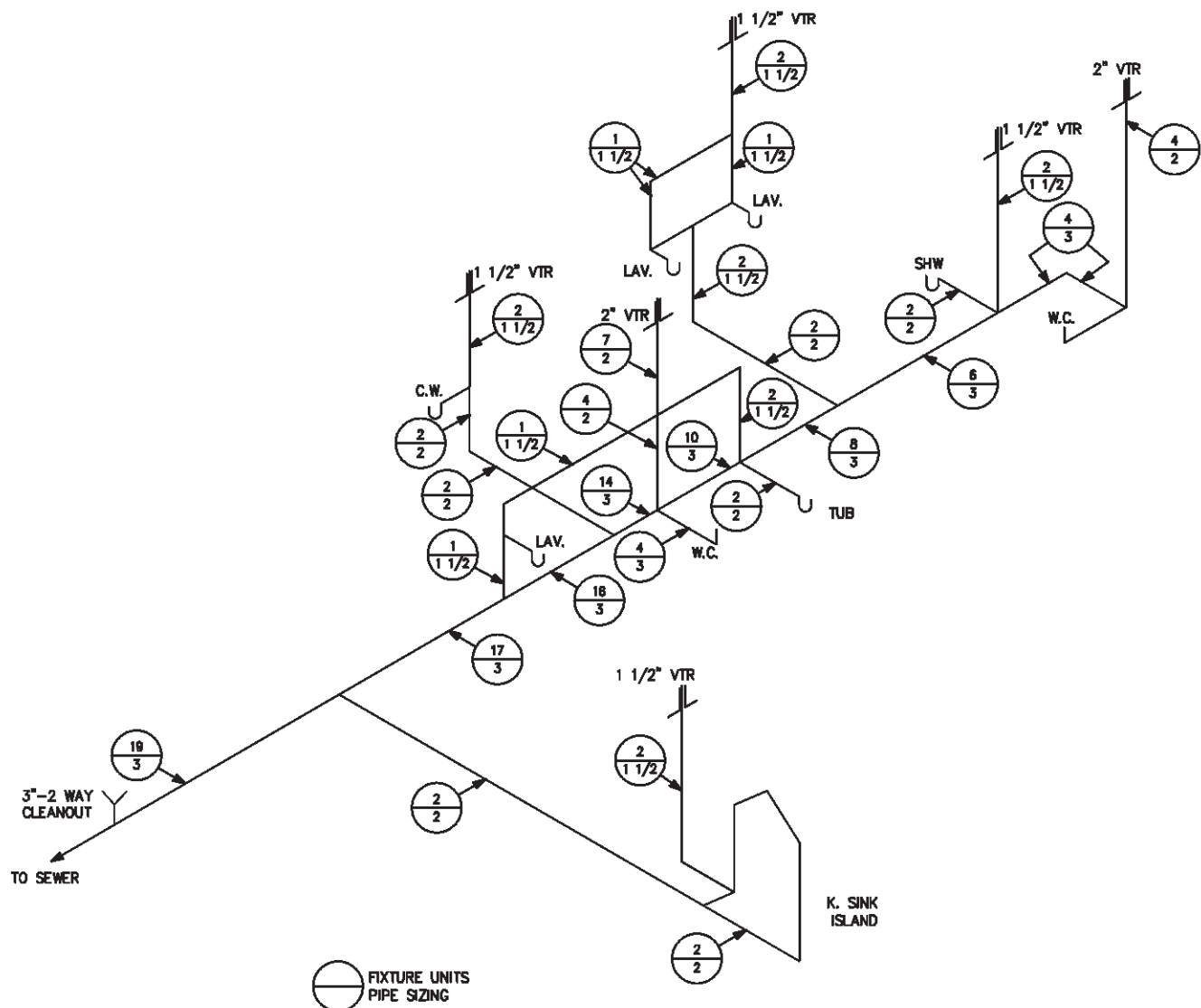
WATER SCHEMATIC
NOT TO SCALE



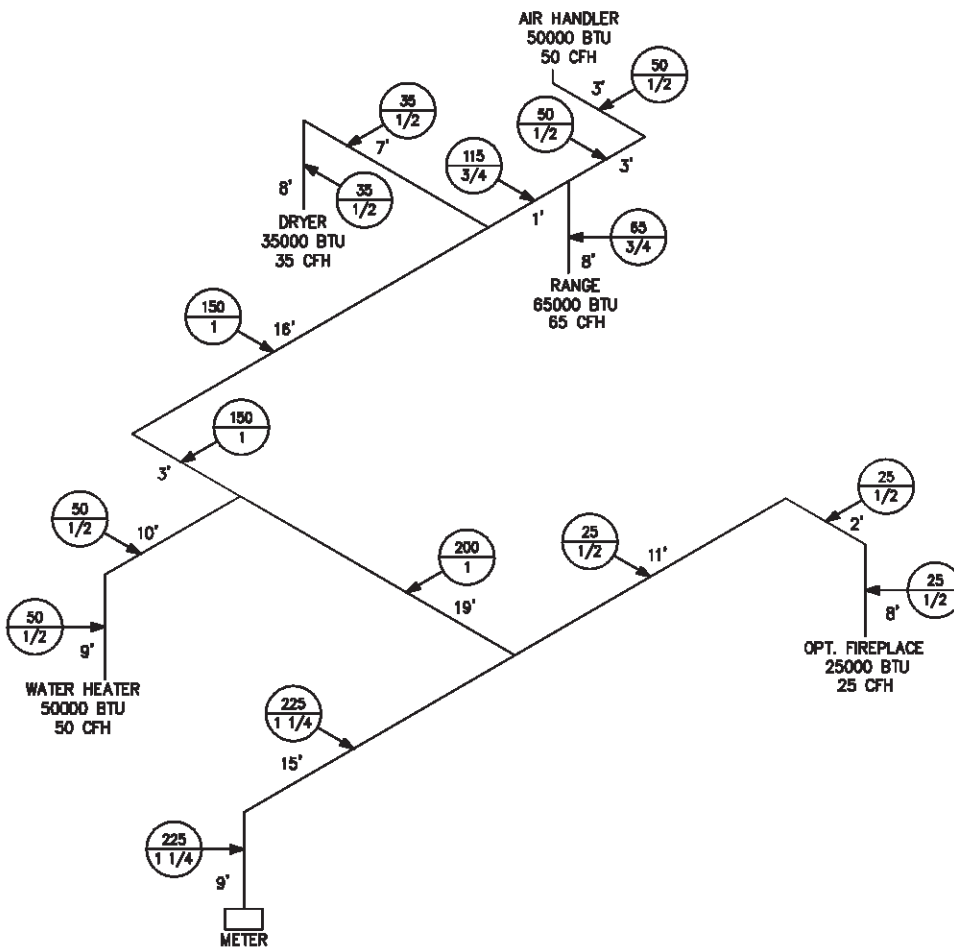
- ### GENERAL INFORMATION
- 10/1/98
- DRAINAGE PIPING SERVING FIXTURES WHICH HAVE FLOOD LEVEL RIMS LOCATED BELOW THE ELEVATION OF THE NEXT UPSTREAM MANHOLE COVER OF THE PUBLIC OR PRIVATE SEWER SERVING SUCH DRAINAGE PIPING SHALL BE PROTECTED FROM BACKFLOW OF SEWAGE BY INSTALLING AN APPROVED TYPE BACKWATER VALVE. FIXTURES ABOVE SUCH ELEVATION SHALL NOT DISCHARGE THROUGH THE BACKWATER VALVE.
 - DRAINAGE PIPING THAT ARE LOCATED BELOW THE CROWN LEVEL OF THE MAIN SEWER SHALL DISCHARGE INTO AN APPROVED WATERTIGHT SUMP OR RECEIVING TANK, SO LOCATED AS TO RECEIVE THE SEWAGE OR WASTES BY GRAVITY. FROM SUCH SUMP OR RECEIVING TANK, THE SEWAGE OR OTHER LIQUID WASTES SHALL BE LIFTED AND DISCHARGED INTO THE BUILDING DRAIN OR BUILDING SEWER BY APPROVED EJECTORS, PUMPS, OR OTHER EQUALLY EFFICIENT APPROVED MECHANICAL DEVICE.
 - THE MINIMUM SIZE OF ANY PUMP OR ANY DISCHARGE PIPE FROM A SUMP HAVING A WATER CLOSET CONNECTED THERETO SHALL BE NOT LESS THAN TWO (2) INCHES (51mm).
 - THE DISCHARGE LINE FROM SUCH EJECTOR, PUMP, OR OTHER MECHANICAL DEVICE SHALL BE PROVIDED WITH AN ACCESSIBLE BACKWATER OR SWING CHECK VALVE AND GATE VALVE. IF THE GRAVITY DRAINAGE LINE TO WHICH SUCH DISCHARGE LINE CONNECTS IS HORIZONTAL, THE METHOD OF CONNECTION SHALL BE FROM THE TOP THROUGH A WYE BRANCH FITTING. THE GATE VALVE SHALL BE LOCATED ON THE DISCHARGE SIDE OF THE BACKWATER OR CHECK VALVE.
 - GATE VALVES, WHEN USED ON DRAINAGE WORK, SHALL BE FULL WAY TYPE WITH WORKING PARTS OF CORROSION RESISTANT METAL. SIZES FOUR (4) INCHES (102mm) OR MORE IN DIAMETER SHALL HAVE CAST IRON BODIES, AND SIZES LESS THAN FOUR (4) INCHES (102mm), CAST IRON OR BRASS BODIES.

WASTE FIXTURE COUNT				
FIXTURES	TRAP ARM SIZE	NUMBER OF FIXTURES	UNITS 1991 UPC TABLE 4-1, 1994 UPC TABLE 7-3	TOTAL FIXTURE UNITS
BATHTUB	1 1/2"	1	2	2
BIDETS	1 1/2"	0	2	0
C. WASHER	2"	1	2	2
FLOOR DRAIN	1 1/2"	0	2	0
SHOWER	2"	1	2	2
LAUNDRY TUB	2"	0	2	0
SINK/DW	1 1/2"	1	2	2
2" WASTE				
BAR SINK	1 1/2"	0	1	0
LAVATORY	1 1/4"	3	1	3
W. CLOSET	3"	2	4	8
TOTAL FIXTURE UNITS			19	

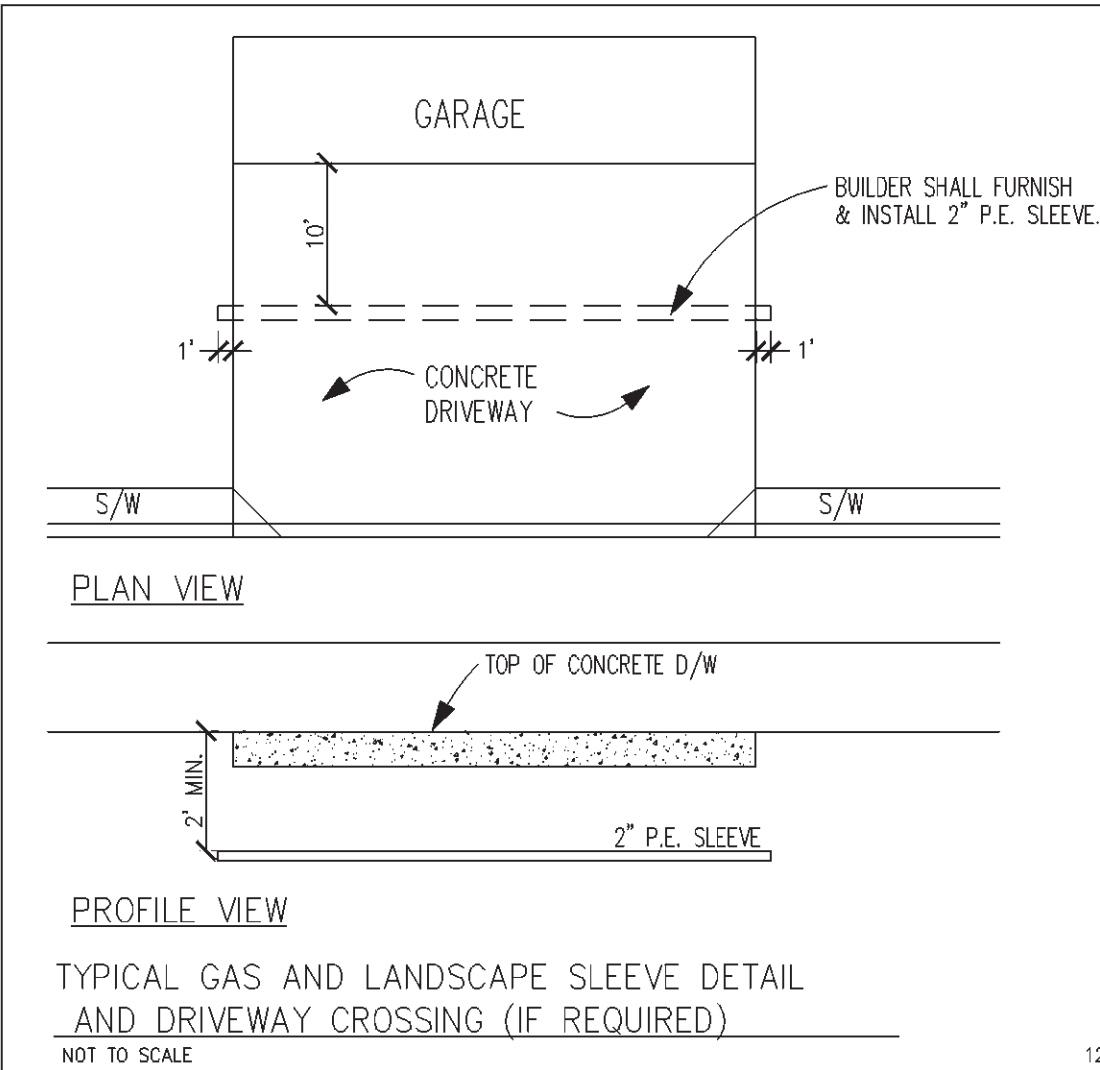
SUPPLY FIXTURE COUNT				
FIXTURES	MINIMUM CONNECTIONS	NUMBER OF FIXTURES	UNITS 1991 UPC TABLE 10-1, 1994 UPC TABLE 6-3	TOTAL FIXTURE UNITS
BATHTUB	1/2" COLD 1/2" HOT	1	2	2
BIDETS	1/2" COLD 1/2" HOT	0	2	0
C. WASHER	1/2" COLD 1/2" HOT	1	6	6
LAUNDRY TUB	1/2" COLD 1/2" HOT	0	2	0
SHOWER	1/2" COLD 1/2" HOT	1	2	2
SINK/DW	1/2" COLD 1/2" HOT	1	2 EA.	4
BAR SINK	1/2" COLD 1/2" HOT	0	1	0
LAVATORY	3/8" COLD 3/8" HOT	3	1	3
W. CLOSET	3/8" COLD 3/8" HOT	2	3	6
REFRIG.	1/2" COLD 1/2" HOT	1	1	1
HOSE BIBB	1/2" COLD 1/2" HOT	2	3	6
LAWN SPRINK.	1/2" COLD 1/2" HOT	0	1/HEAD	0
ICE MAKER	1/2" COLD 1/2" HOT	0	1	0
TOTAL FIXTURE UNITS			30	



DWV SCHEMATIC
NOT TO SCALE
SCHEMATIC ONLY - FOR PIPE SIZE AND CLEANOUT LOCATIONS



RIGHT GAS SCHEMATIC
NOT TO SCALE



WINDAMERE HOMES
5855 E. MCDOWELL RD.
MESA, AZ 85215

[i] PLAN
4710 E. Falcon Dr. Suite 111
Mesa, AZ 85215
(602) 807-1539 (602) 807-1553

GAS / PLUMBING PLAN

DRAWN BY: [i] PLAN
RELDATE: 3-12-99
Rev. DATE:
1
2
3
4
5
6

PLAN #
3401

SHEET No.
P1
11 OF 15