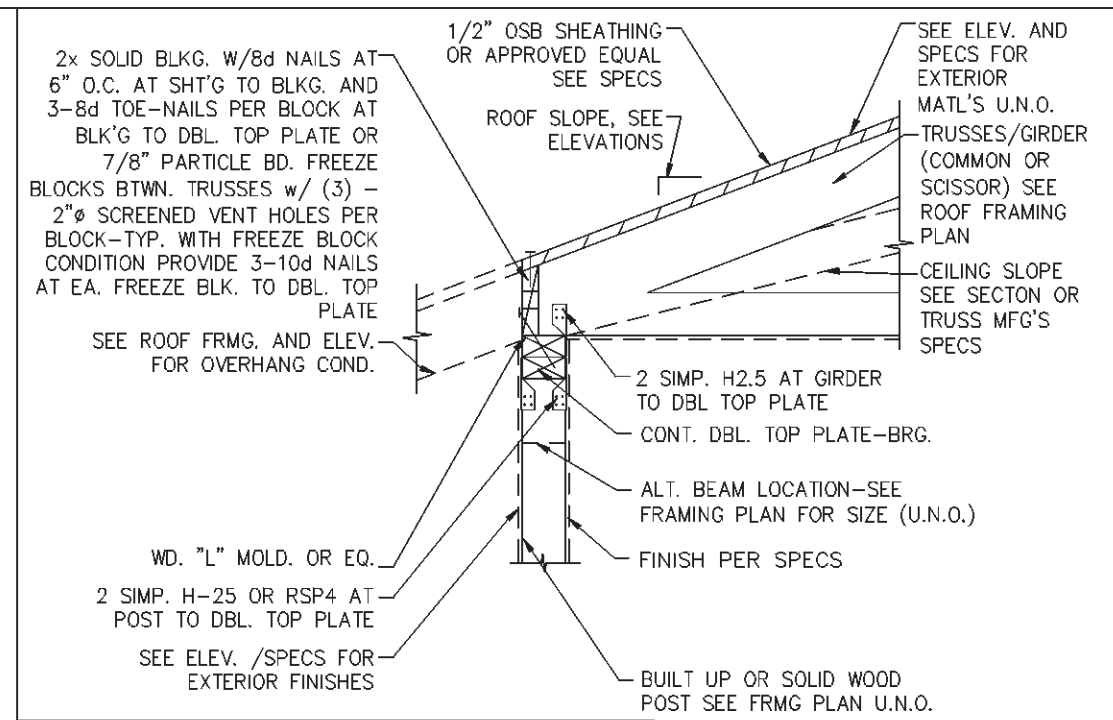


NOTE: ALL SOISSORS TRUSS LOCATIONS ALLOW FOR FREE HORIZONTAL MOVEMENT AT ONE SUPPORT w/ SIMPSON CONNECTOR. INSTALL NAILS IN SIMPSON H2.5s AFTER LOADING WITH ALL MATERIALS.

NOTE: USE SAME ANCHORAGE AT TRUSSES TO BEAM CONNECTION - U.N.O.

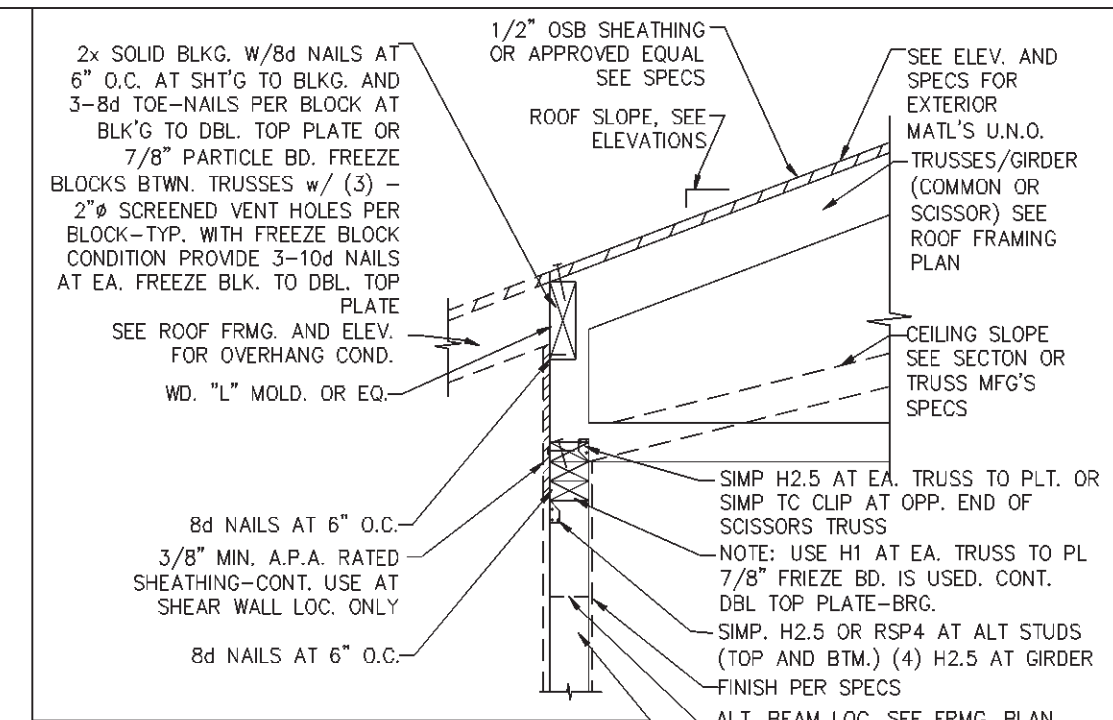
① TRUSS/WALL (BEAM SIM)



NOTE: ALL SOISSORS TRUSS LOCATIONS ALLOW FOR FREE HORIZONTAL MOVEMENT AT ONE SUPPORT w/ SIMPSON TO CONNECTOR.

NOTE: USE SAME ANCHORAGE AT TRUSSES TO BEAM CONNECTION - U.N.O.

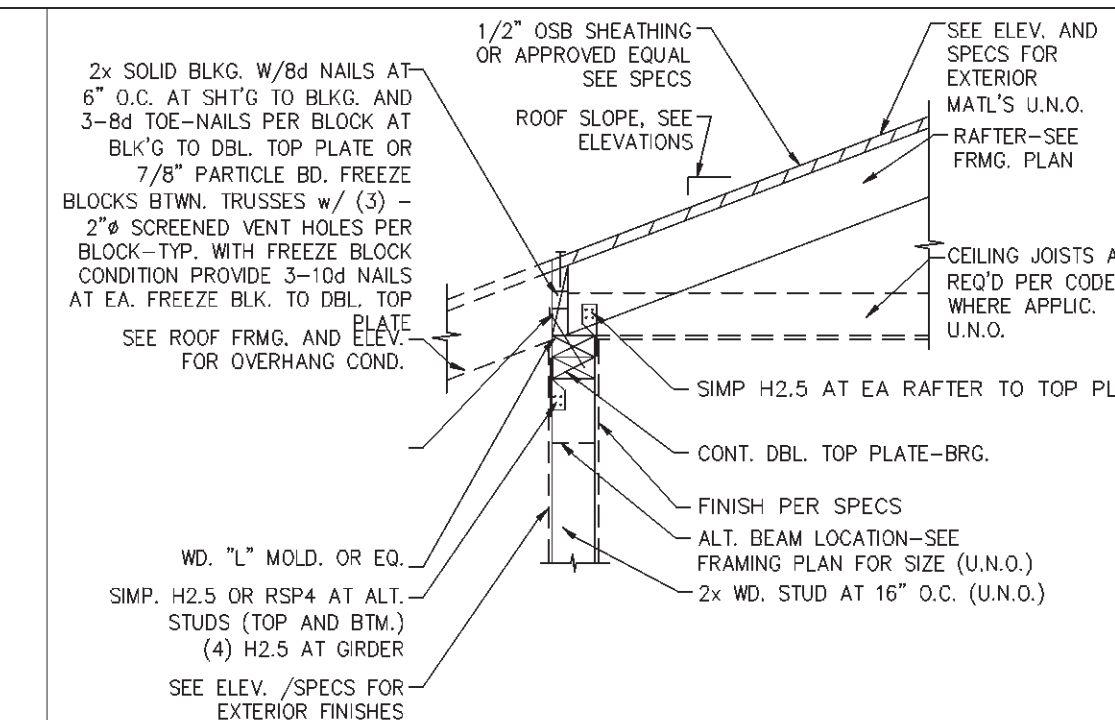
② GIRDER TRUSS/WALL (BEAM SIM)



NOTE: ALL SOISSORS TRUSS LOCATIONS ALLOW FOR FREE HORIZONTAL MOVEMENT AT ONE SUPPORT w/ SIMPSON TO CONNECTOR.

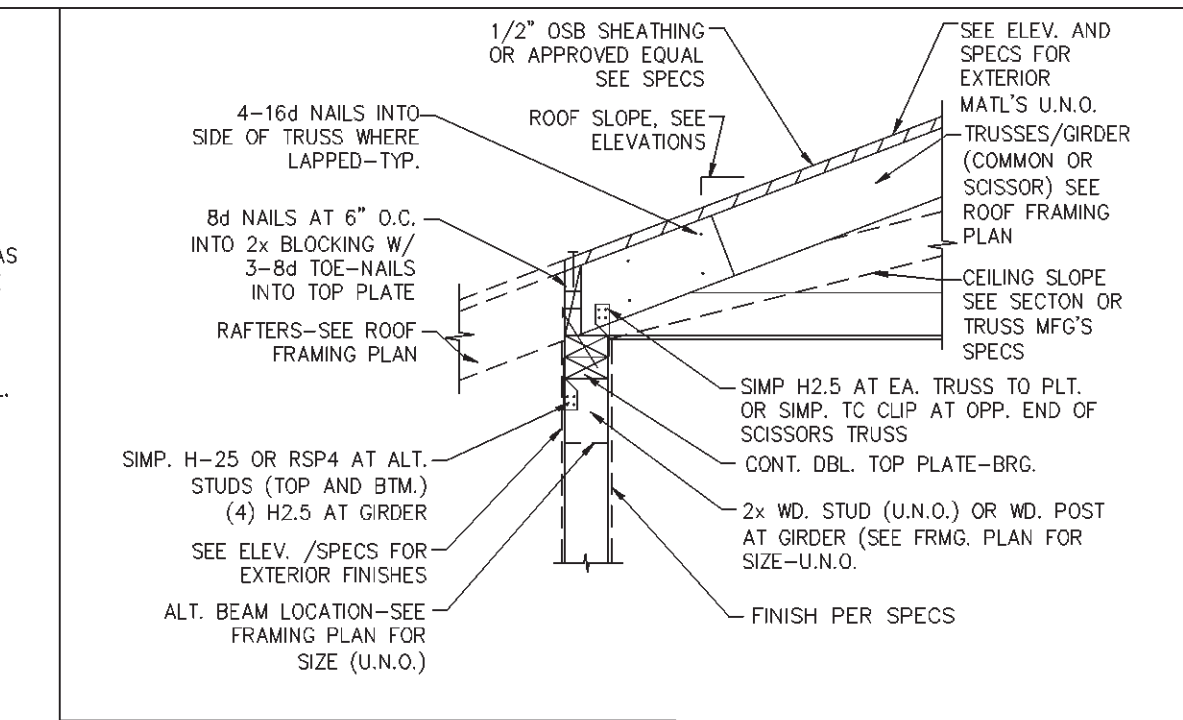
NOTE: USE SAME ANCHORAGE AT TRUSSES TO BEAM CONNECTION - U.N.O.

③ STUBBED TRUSS/WALL (BEAM SIM)



NOTE: USE SAME ANCHORAGE AT TRUSSES TO BEAM CONNECTION - U.N.O.

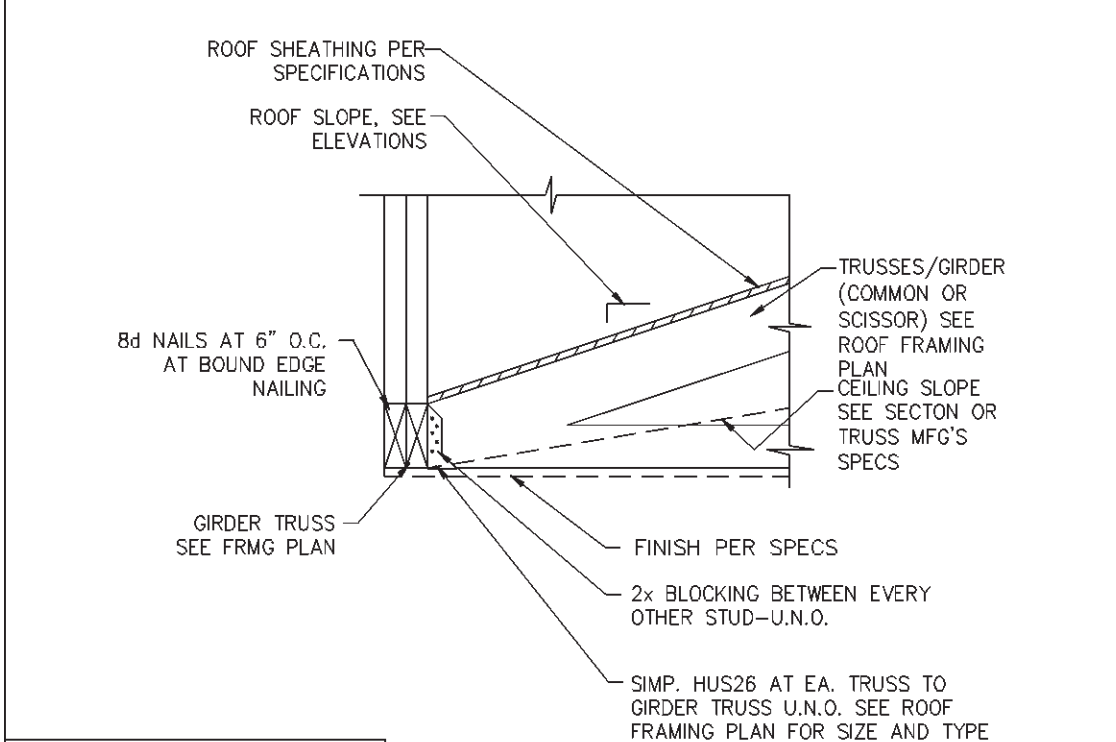
④ RAFTERS/WALL (BEAM SIM)



NOTE: ALL SOISSORS TRUSS LOCATIONS ALLOW FOR FREE HORIZONTAL MOVEMENT @ ONE SUPPORT w/ SIMPSON TO CONNECTOR.

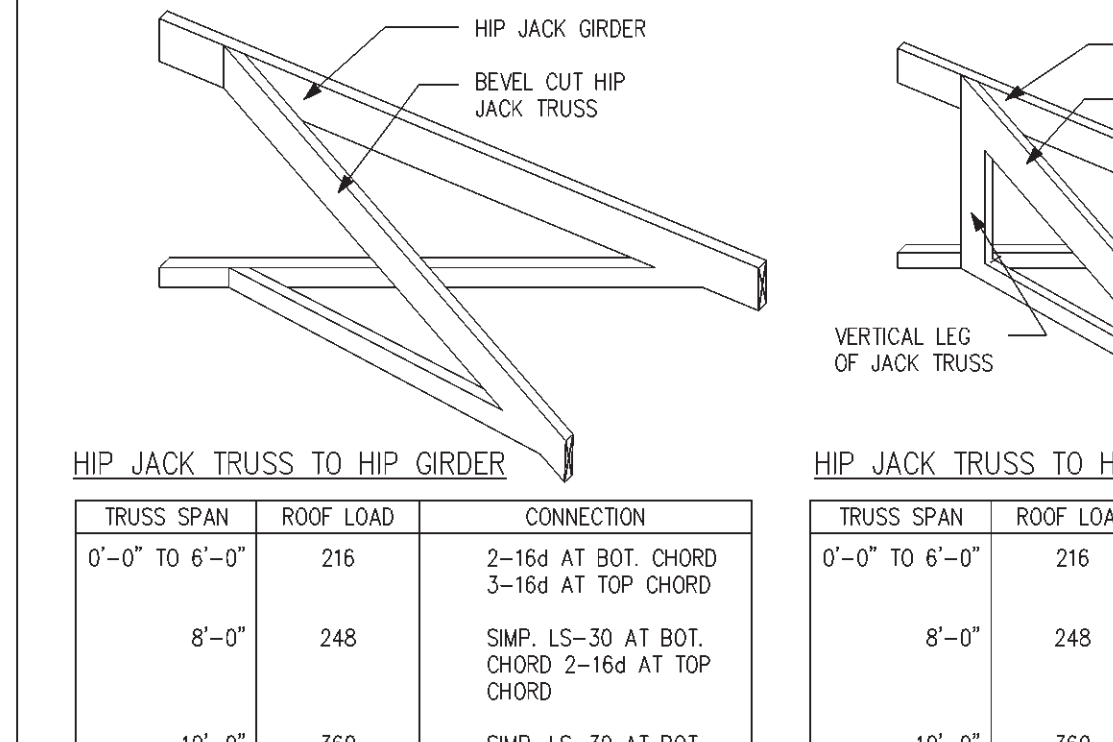
NOTE: USE SAME ANCHORAGE AT TRUSSES TO BEAM CONNECTION - U.N.O.

⑤ TRUSS/WALL/RAFTER CONN

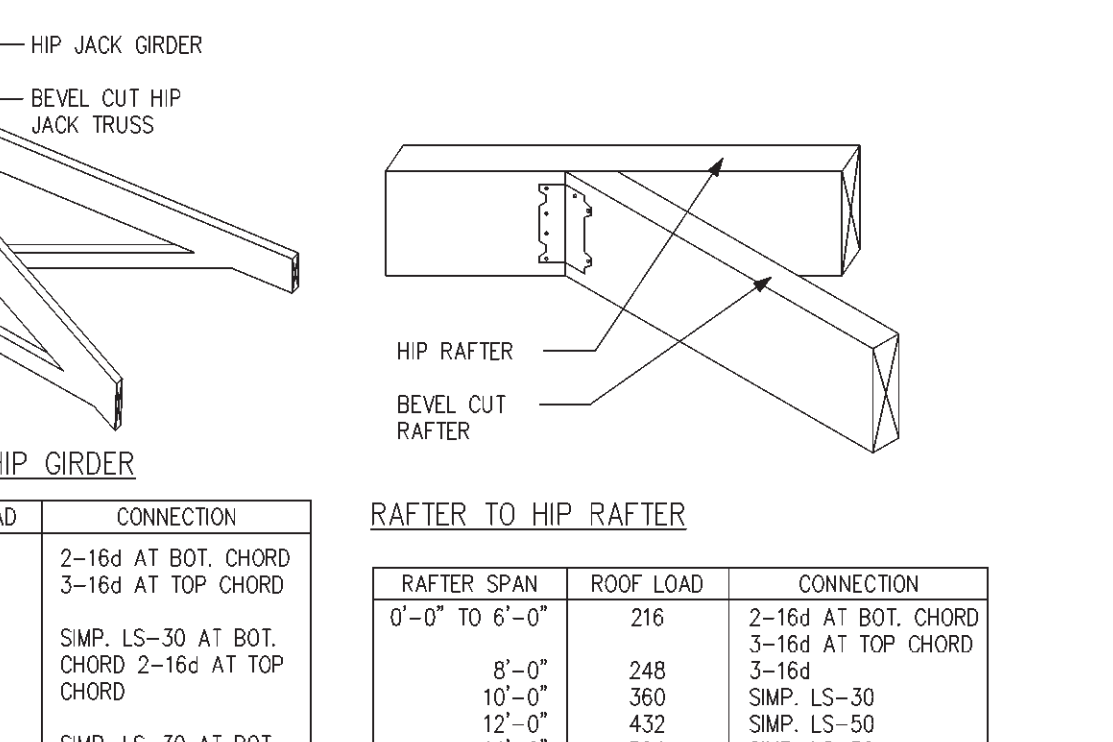


NOTE: BOTTOM CORD OF GIRDER TO BE DEEP ENOUGH SO THAT SIDE FLANGES OF SIMPSON HANGER ARE NOT BENT

⑥ TRUSS/GIRDER

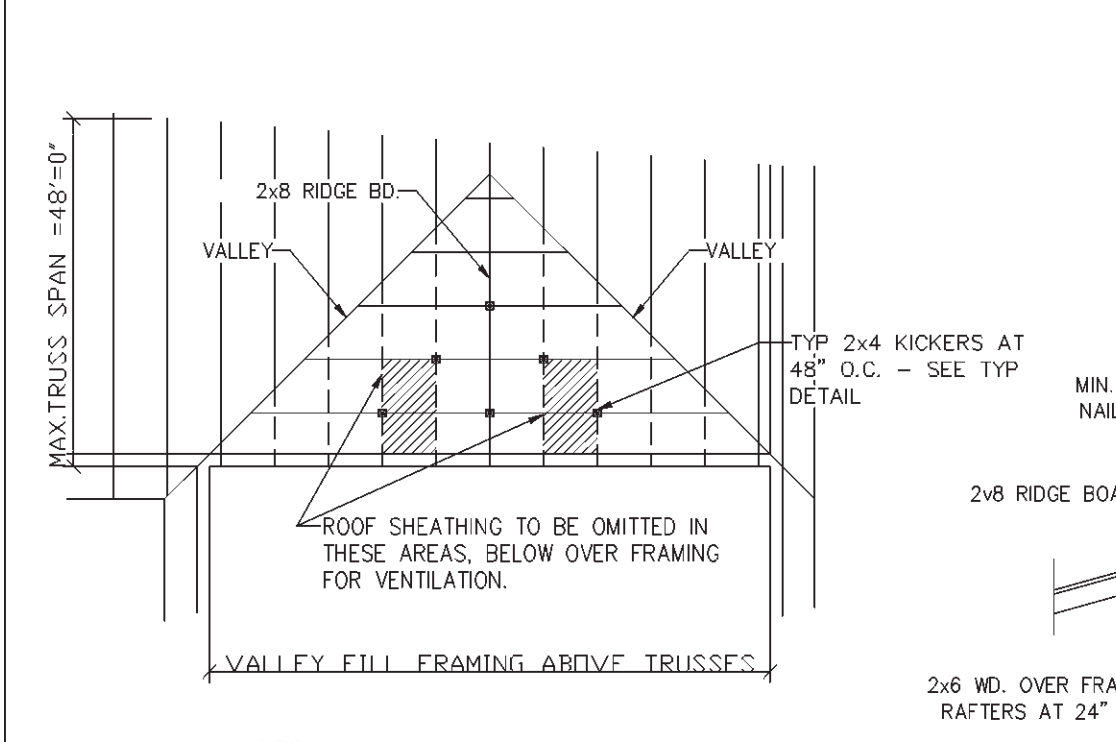


⑦ RAFTER, HIP JACK, AND JACK TRUSS CONNECTION DETAILS



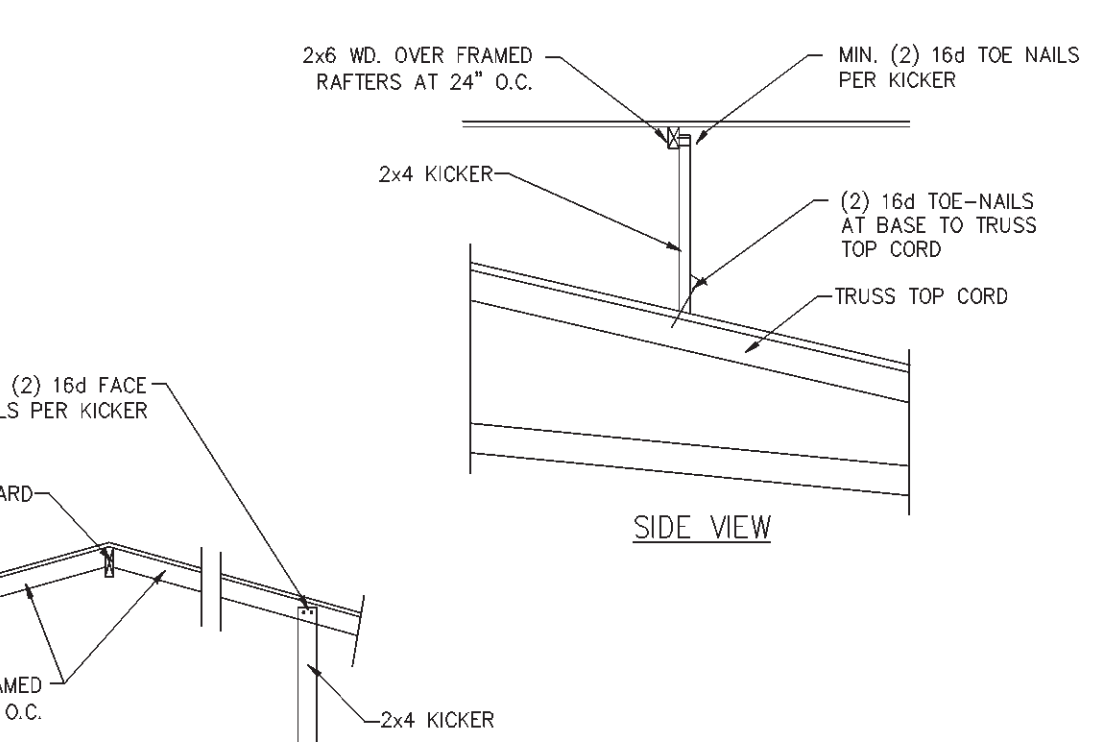
NOTE: AT LEDGER SPLICE, USE DBL STUDS

⑧ RAFTERS / LEDGER WALL (ROOF ONLY)



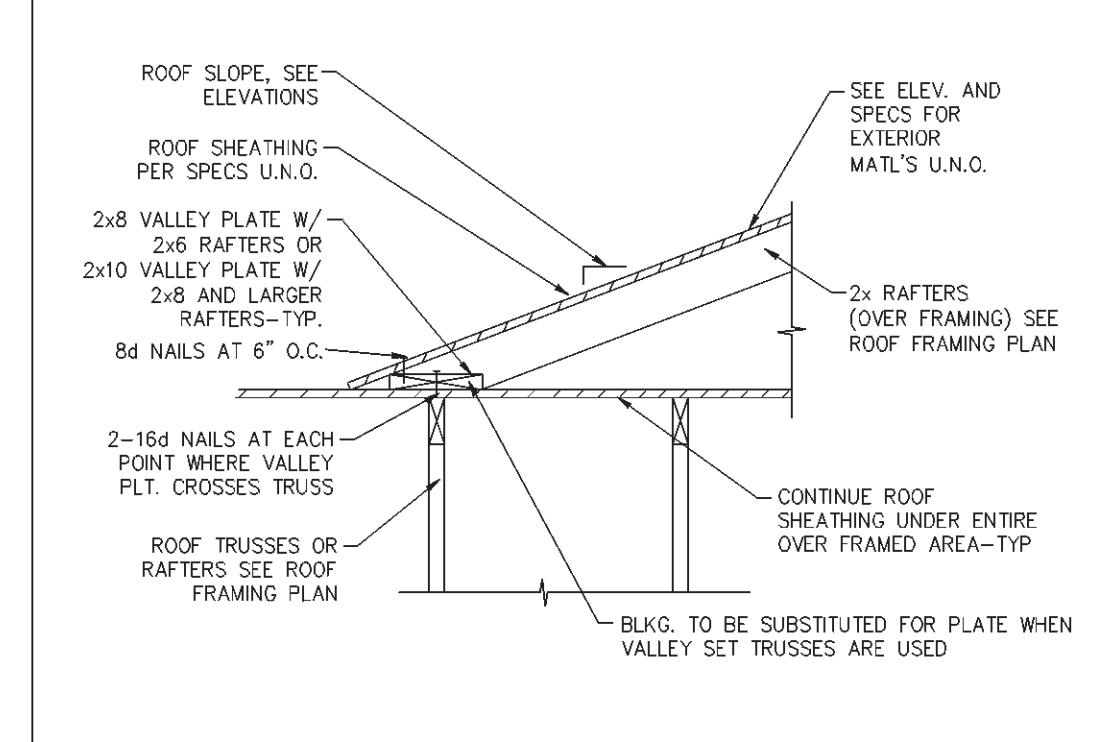
NOTE: SPANS (VALLEY FILL) OF 8'-0\"/>

⑨ SUPPORT OF VALLEY RAFTERS AT OVERFRAMED ROOF



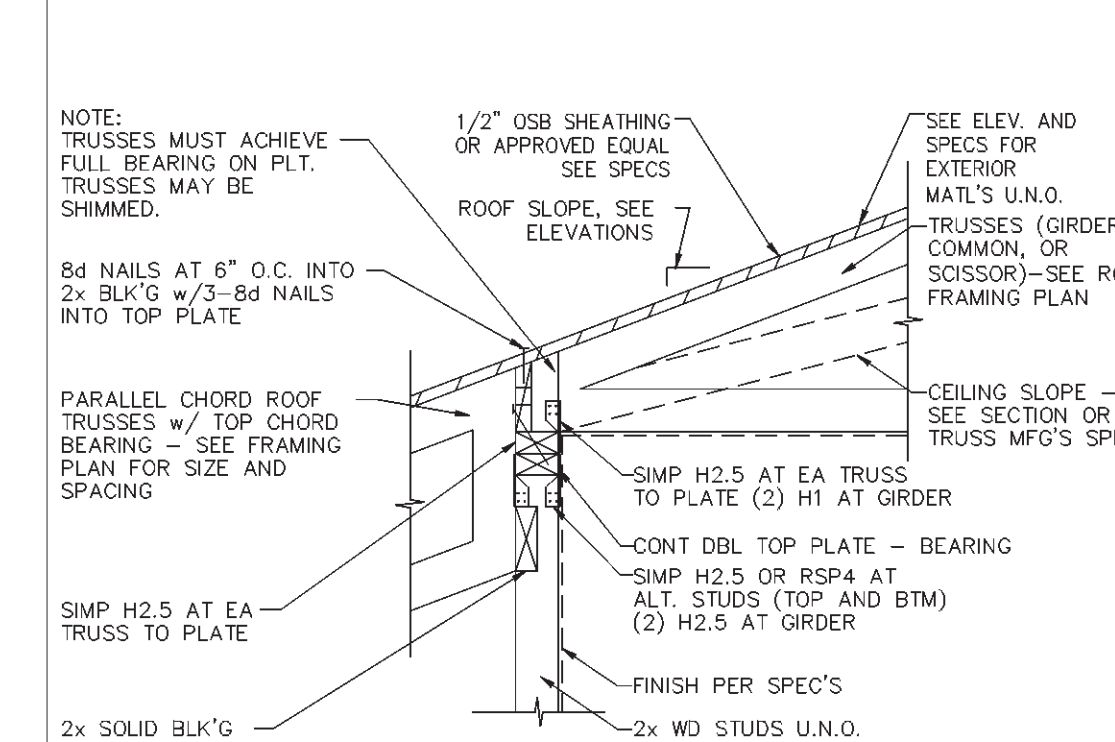
NOTE: TRUSSES MUST ACHIEVE FULL BEARING ON PLT. TRUSSES MAY BE SHIMMED.

⑩ VALLEY OVERFRAMING AT ROOF



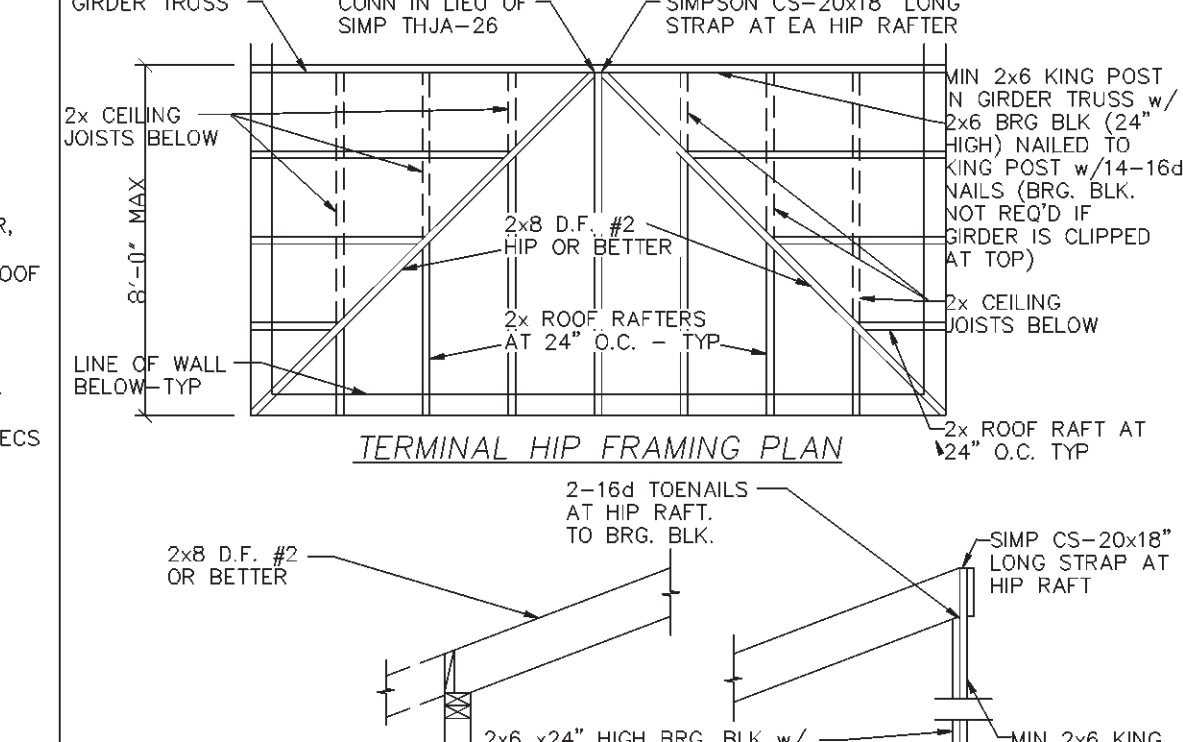
NOTE: BEARING BLOCK NOT REQUIRED IF GIRDER IS INSTALLED AT TOP

⑪ TRUSS/TRUSS/WALL CONN



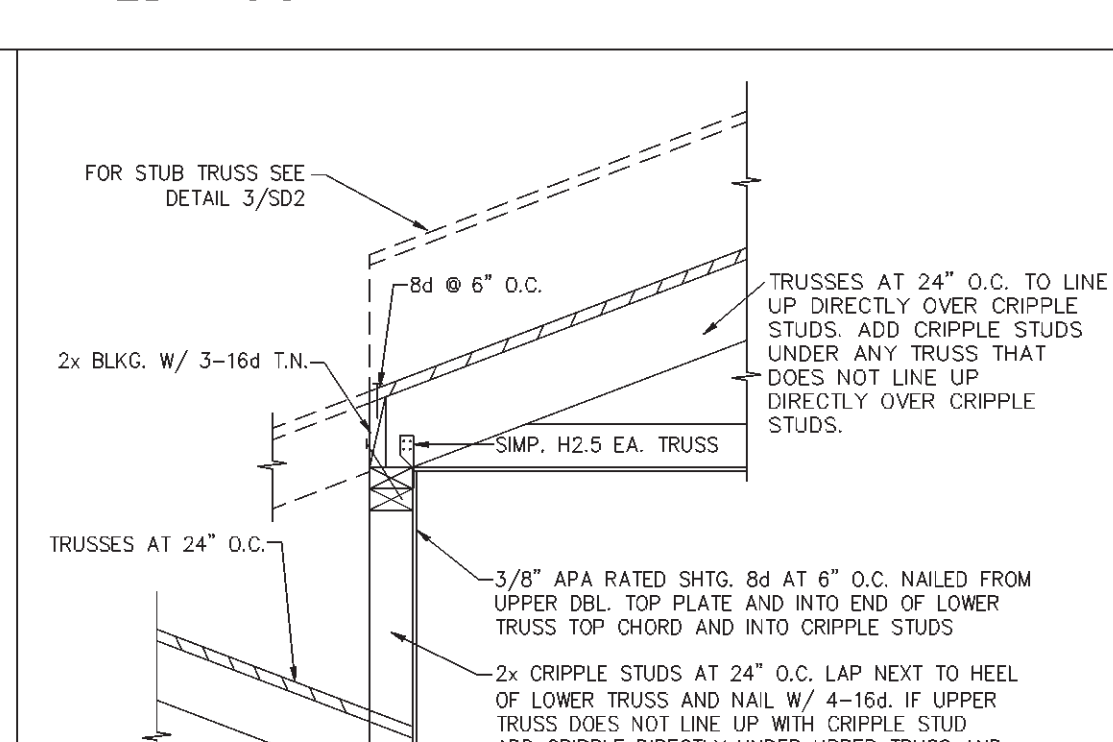
NOTE: BEARING BLOCK NOT REQUIRED IF GIRDER IS INSTALLED AT TOP

⑫ ALT HIP FRAMING



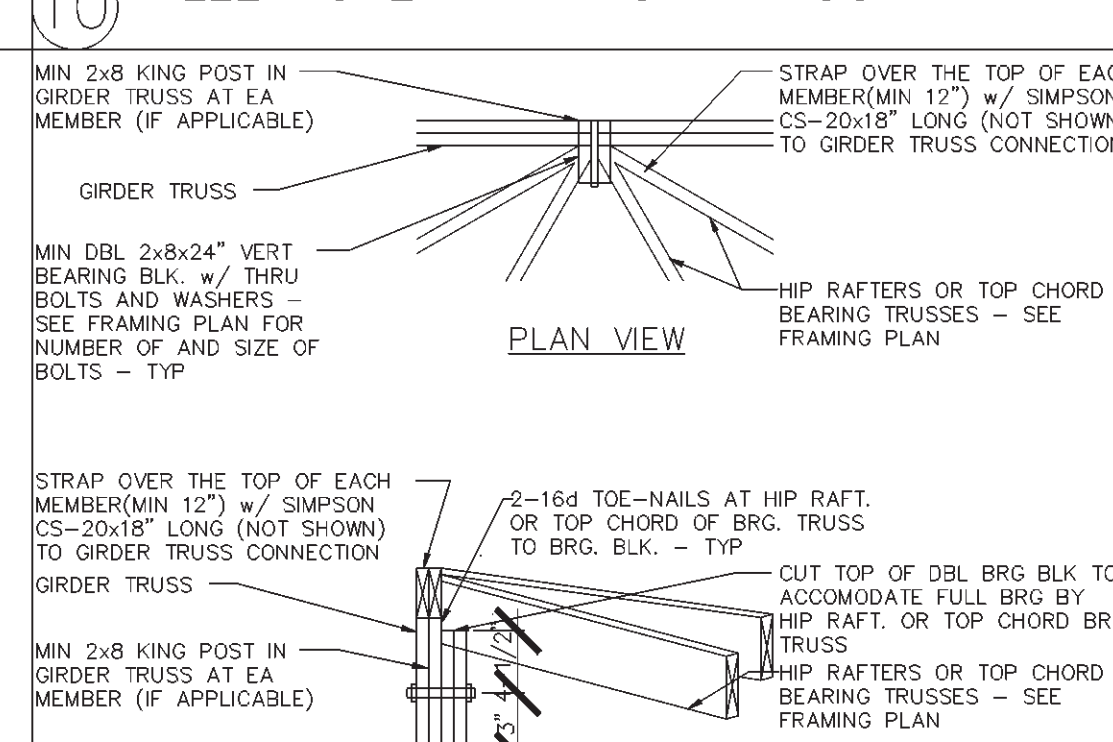
NOTE: BEARING BLOCK NOT REQUIRED IF GIRDER IS INSTALLED AT TOP

⑬ GABLE ENDWALL TRUSS



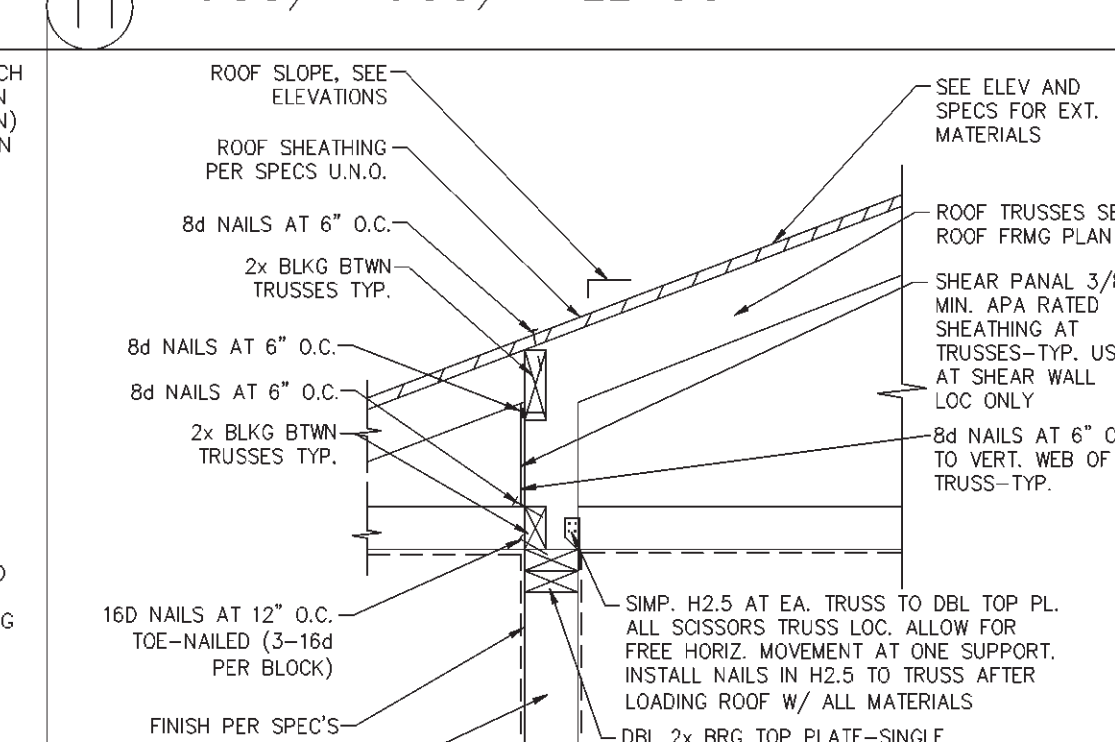
NOTE: BEARING BLOCK NOT REQUIRED IF GIRDER IS INSTALLED AT TOP

⑭ LOWER TRUSS/WALL/UPPER ENTRY ROOF TRUSS CONNECTION



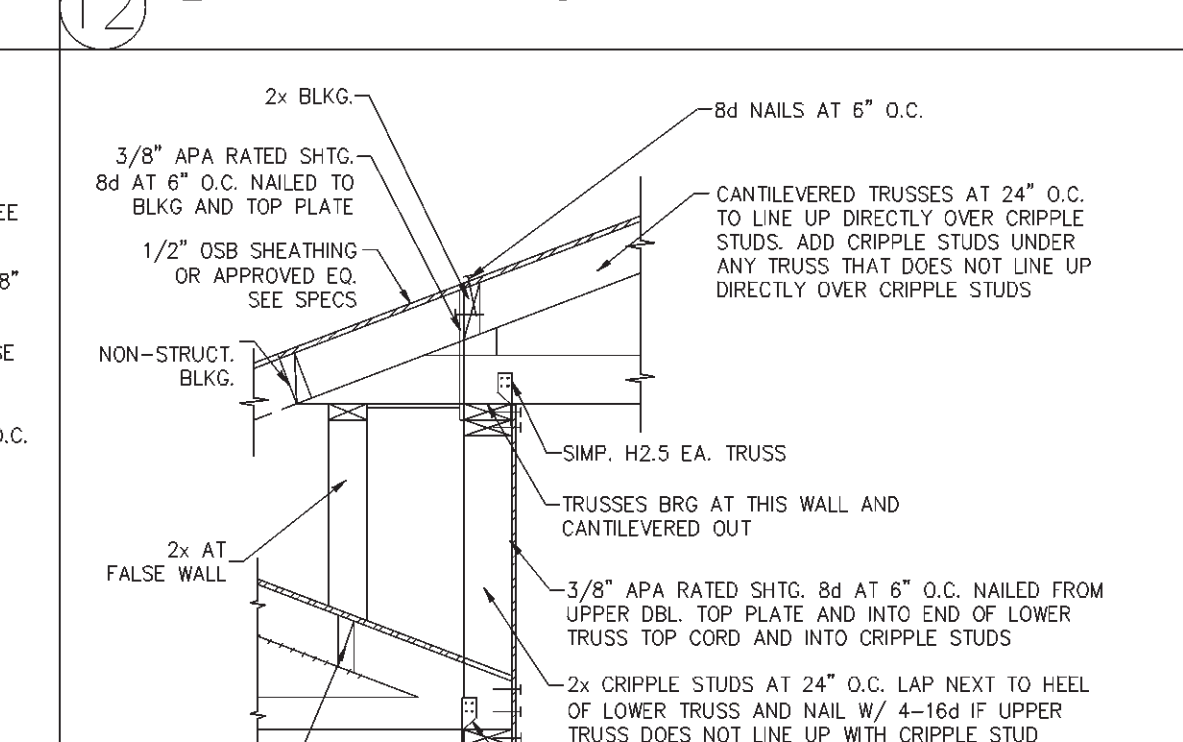
NOTE: FOR HIP RAFTER SPANS 8'-0\"/>

⑮ HIP RAFTERS OR T.C. BRG. TRUSS/GIRDER



NOTE: BEARING BLOCK NOT REQUIRED IF GIRDER IS INSTALLED AT TOP

⑯ TRUSS/WALL SHEAR TRANSFER



NOTE: BEARING BLOCK NOT REQUIRED IF GIRDER IS INSTALLED AT TOP

⑰ LOWER TRUSS/WALL/UPPER ENTRY ROOF TRUSS CONNECTION

WINDAMERE HOMES
5855 E. MCDOWELL RD.
MESA, AZ 85215

PLAN
4710 E. Falcon Dr. Suite 111
Mesa, AZ 85215
(602) 807-1539 (602) 807-1553

FRAMING DETAILS

DRAWN BY: [i] PLAN
RELDATE: 3-12-99
Rev. DATE:

PLAN #
3401

SHEET No.
SD2
14 OF 15