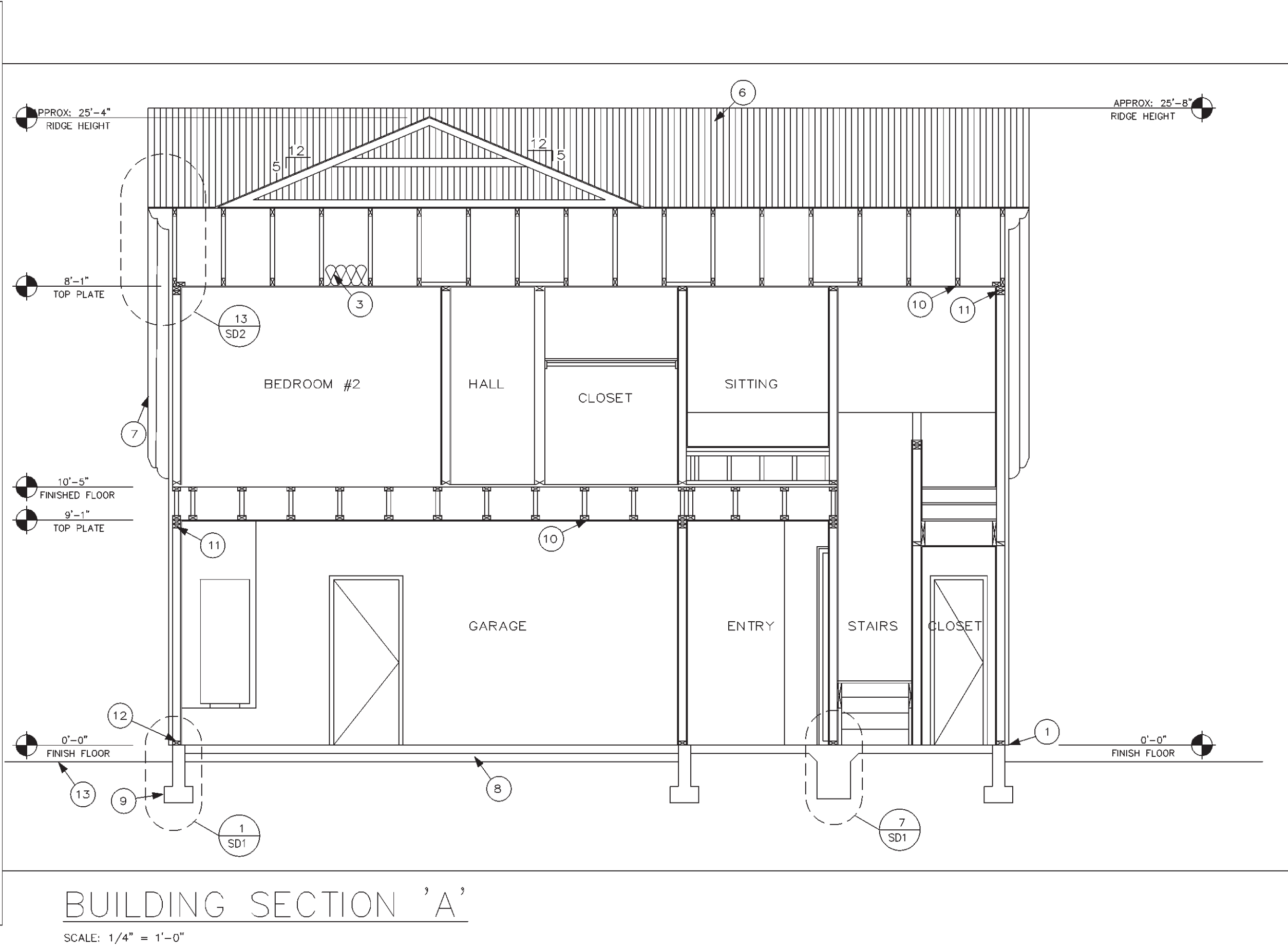
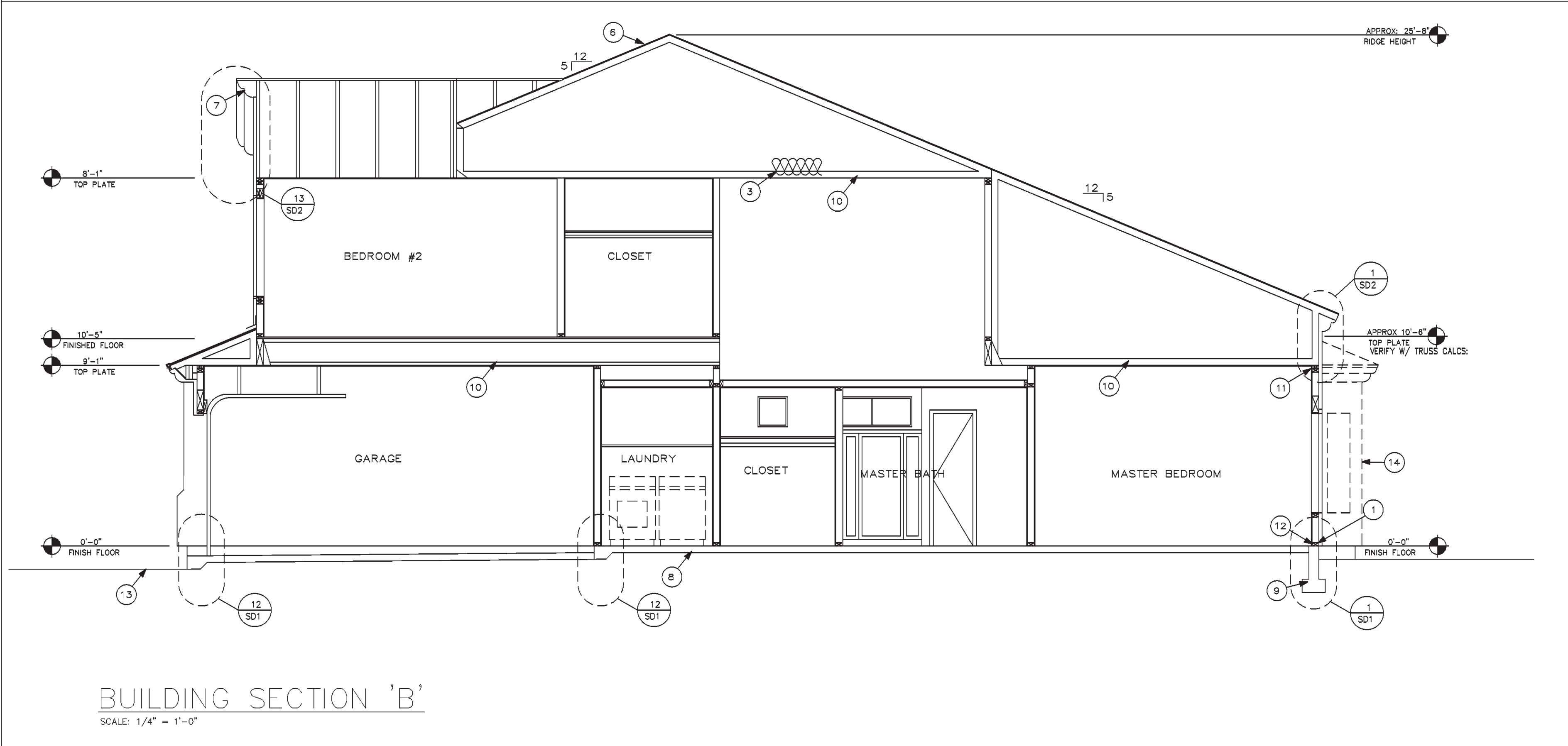


GENERAL INFORMATION			KEYNOTES	
3/23/98			SEE COVER SHEET FOR OPTION INFORMATION	
1. TYPICAL HEADER HEIGHT FOR DOORS 6'-8" U.N.C. 7'-0" FOR WINDOWS U.N.O.				
2. WEEP SCREED SHALL BE OF NO. 26 GAUGE CORROSION RESISTANT METAL W/ A MIN. VERTICAL ATTACHMENT FLANGE OF 3 1/2" AND PLACED A MIN. OF 3/4" BELOW TOP OF FINISHED FLOOR AND A MIN. OF 6" ABOVE FINISHED GRADE @ ALL EXTERIOR WALLS				
3. SUPPLY INSULATION BAFFLES AT ATTIC VENTILATION AREAS. CUT INSULATION BACK FROM OPENINGS. SUPPLY A MINIMUM OF 1" AIR SPACE BETWEEN THE INSULATION AND ROOF SHEATHING PER 1997 UBC SEC. 1505.3.				
4. WINDOW FRAMES TO BE PAINTED OR ANODIZED TO MATCH EXTERIOR. NO EXPOSED WOOD OR METAL.				
5. ALL VENTS, FLASHING, FASCIAS, ELECTRICAL PANELS ETC. TO BE COLORED/ PAINTED TO MATCH HOUSE.				
6. CHIMNEY SHALL BE CONSTRUCTED OF MASONRY OR STUCCO AND SHALL BE FINISHED & PAINTED TO MATCH HOUSE. NO EXPOSED FLUES.				
No.	DESCRIPTION			
①	WEEP SCREED	⑧	CONC. SLAB	
②	FIRE BLOCKING	⑨	FOOTING SEE STRUCTURAL SHEETS FOR DETAILS	
③	INSULATION SEE SPECS.	⑩	PRE-MANUFACTURED TRUSS SEE SPECS.	
④	BLOCKING, SEE VENT CALCULATIONS & ROOF FRAMING PLAN	⑪	DOUBLE TOP PLATE SEE STRUCT. DETAILS	
⑤	LINE OF OPTIONAL VAULTED CEILING	⑫	PRESSURE TREATED SILL PLATE SEE STRUCT.	
⑥	CONC. ROOFTILE SEE SPECS.	⑬	FINISH GRADE	
⑦	FASCIA	⑭	OPT. BAY	

WINDAMERE HOMES
5855 E. MCDOWELL RD.
MESA, AZ 85215

[i] PLAN
4710 E. Falcon Dr. Suite 111
Mesa, AZ 85215
(602) 807-1539 (602) 807-1553

BUILDING SECTIONS



① ATTIC ACCESS
N.T.S.

② FIREPLACE DETAILS

GAS FIREPLACE VENT NOTES:

- VENT MAY NOT BE LOCATED WITHIN 9 INCHES OF DOOR OR WINDOW.
- MIN. CLEARANCE ABOVE GRADE, VERANDA, PORCH OR BALCONY IS 12 INCHES
- CLEARANCE TO OUTSIDE CORNER IS A MIN. OF 9 INCHES.
- CLEARANCE TO INSIDE CORNER IS A MIN. OF 6 INCHES.
- VENT MAY NOT BE INSTALLED ABOVE A GAS METER/ REGULATORY ASSEMBLY OR WITHIN 3 FEET HORIZONTALLY FROM THE CENTER LINE OF THE REGULATOR.
- VENT CLEARANCE TO ADJACENT AIR SUPPLY INLETS SHALL BE A MIN. OF 9 INCHES FOR A NON-MECHANICAL INLET AND 6 FEET FROM A MECHANICAL AIR SUPPLY.
- CLEARANCE UNDER VERANDA, PORCH, DECK OR BALCONY WHERE FULLY OPEN ON A MIN. OF TWO (2) SIDES BENEATH THE FLOOR SHALL BE 12 INCHES.
- FOR GAS LOG FIREPLACES, BLOCK OPEN THE DAMPER PER UMC 901

NOTE:
MODEL # - SUPERIOR DV33T OR DV33R
CERTIFICATE #. L2970013
ICBO NO. : PENDING
AGA #L2970009
OR
WOOD BURN HEATILATOR MODEL "LE" LOW EMISSION, APPRVD FOR USE AFTER 1-1-99 TESTED AND LISTED TO THE "UL 127" STANDARD FOR FACTORY-BUILT FIREPLACES.

***NOTE:**
PROVIDE AN APPROVED BARRIER BETWEEN FACTORY FIREPLACE BOXES AND CHIMNEYS, AND BUILDING INSULATION. CLEARANCE SHALL BE MAINTAINED BETWEEN THE CHIMNEY AND COMBUSTIBLE BARRIERS AND BETWEEN THE FIREPLACE OPENING AND ANY COMBUSTIBLE MATERIAL OUTSIDE THE FIREBOX PER MANUFACTURER'S INSTALLATION INSTRUCTIONS.

③ FIREPLACE ELEVATION

NOTE:
*- ALL FIREPLACES MUST BE INSTALLED PER MANUFACTURER SPECIFICATION.
*- ADJUST THE SIZE OF FIREBOX AND NON COMBUSTIBLE MATERIAL AROUND THE FIREBOX PER MANUFACTURER SPECIFICATION.
NOTE: WHEN FIREBOX IS NOT INCLUDED NICHE DIMENSIONS STAY THE SAME ONLY THE DEPTH OF FIREPLACE SIDE CHANGES

DRAWN BY:	
[i] PLAN	
RELD DATE:	3-25-99
Rev.	DATE:
1	
2	
3	
4	
5	
6	

PLAN #
3404

SHEET No.
A5
12 OF 19

© COPYRIGHT 1999 WINDAMERE HOMES