



2009 IECC

**Section 1: Project Information**

Project Type: Addition  
 Project Title: FOENIX PROPERTIES  
 Construction Site: 1806 N. Lindsay Road, Mesa, AZ 85213  
 Owner/Agent: HDA Architects, 480.539.8900  
 Designer/Contractor: Kraemer Consulting Engineers, Phoenix, AZ 85343  
 Design/Contractor: Kraemer Consulting Engineers, Phoenix, AZ 85343  
 Design/Contractor: Kraemer Consulting Engineers, Phoenix, AZ 85343  
 Design/Contractor: Kraemer Consulting Engineers, Phoenix, AZ 85343

**Section 2: Interior Lighting and Power Calculation**

Area Category	A Floor Area (sq. ft.)	B Allowed Watts (sq. ft.)	C Allowed Watts (sq. ft.)	D Allowed Watts (sq. ft.)
Office	1,4200	0.8	11,360	850
Warehouse				
Total Allowed Watts =				12310

**Section 3: Interior Lighting Fixture Schedule**

Fixture ID	Description / Lamp / Wattage Per Lamp / Ballast	B Lamps / Fixture	C # of Fixtures	D Fixture Watt.	E Fixture (C X D)
Office (850 sq.ft.)	Linear Fluorescent T-8 32W / Electronic	2	14	65	910
Warehouse (14200 sq.ft.)	High Bay / Metal Halide 400W / Standard	1	17	475	8075
Total Proposed Watts =				8885	

**Section 4: Requirements Checklist**

**Interior Lighting PASSES: Design: 82%, Better than code.**

**Lighting Wattage:**  
 1. Total proposed watts must be less than or equal to total allowed watts.  
 12310 Allowed Watts, 8885 Proposed Watts, Complies YES

**Controls, Switching and Wiring:**  
 2. Daylight zones under skylights more than 15 feet from the perimeter have lighting controls separate from daylight zones adjacent to vertical fenestration.  
 3. Daylight zones have individual lighting controls independent from that of the general area lighting.  
 Exceptions:  
 Contiguous daylight zones spanning no more than two orientations are allowed to be controlled by a single controlling device.  
 Daylight zones under skylights more than 15 feet from the perimeter have lighting controls separate from daylight zones adjacent to vertical fenestration.  
 Separate switches for general area lighting.  
 4. Independent controls for each space (switch/occupancy sensor).

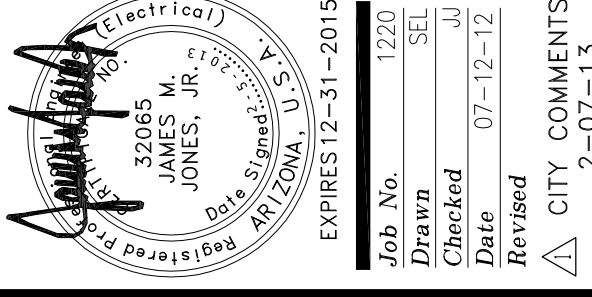
Project Title: FOENIX PROPERTIES  
 Data filename: T:\Projects\2012\12-199\Drawings\Elec\12-199.cck  
 Report date: 02/06/13  
 Page 1 of 2

- Exceptions:
- Areas designated as security or emergency areas that must be continuously illuminated.
  - Lighting in stairways or corridors that are elements of the means of egress.
  - 5. Master switch at entry to hotel/motel guest room.
  - 6. Individual dwelling units separately metered.
  - 7. Medical task lighting or arthroscopy display lighting claimed to be exempt from compliance has a control device independent of the control of the nonexempt lighting.
  - 8. A manual control also allows for reducing the connected lighting load by at least 50 percent by either controlling all luminaires, dual switching of alternate rows of luminaires, alternate luminaires, or alternate lamps, switching the middle lamp luminaires independently of other lamps, or switching each luminaire or each lamp.
- Exceptions:
- Only one luminaire in space.
  - An occupant-sensing device controls the area.
  - The area is a corridor, storeroom, restroom, public lobby or sleeping unit.
  - Areas that use less than 0.5 Watts/sq.ft.
  - 9. Automatic lighting shutoff control in buildings larger than 5,000 sq.ft.
- Exceptions:
- Sleeping units, patient care areas, and spaces where automatic shutoff would endanger safety or security.
  - 10. Photocell/astrocontrol time switch on exterior lights.
- Exceptions:
- Lighting intended for 24-hour use.
  - 11. Tandem wired one-lamp and three-lamp ballasted luminaires (no single-lamp ballasts).
- Exceptions:
- Electronic high-frequency ballasts; luminaires on emergency circuits or with no available path.

**Section 5: Compliance Statement**

Compliance Statement: The proposed lighting design represented in this document is consistent with the building plans, specifications and other calculations submitted with this permit application. The proposed lighting system has been designed to meet the 2009 IECC requirements in COMcheck Version 3.9.1 and to comply with the mandatory requirements in the Requirements Checklist.

Shyrod Long - Sr., Electrical Designer  
 Signature: *[Signature]*  
 Date: 3-3-13



EXPIRES 12-31-2015  
 Job No. 1207  
 Design SET  
 Checked 07-12-13  
 Date Revised  
 CITY COMMENTS  
 2-07-13

PERMIT SET

HDA ARCHITECTS, LLC  
 459 N. Gilbert Road, Suite C-200, Gilbert, AZ 85234  
 TEL: (480) 539 8800 FAX: (480) 539 8608  
 LIGHTING COMPLIANCE FORM



Sheet No. E501



Kraemer Consulting Engineers, PLLC  
 Mechanical and Electrical Engineers  
 Phoenix, Arizona 85034-2264  
 (602) 296-1650 - Fax  
 (602) 296-1650 - 12-181