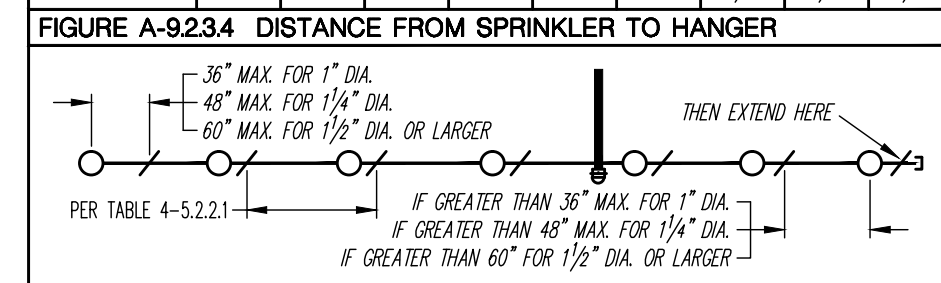
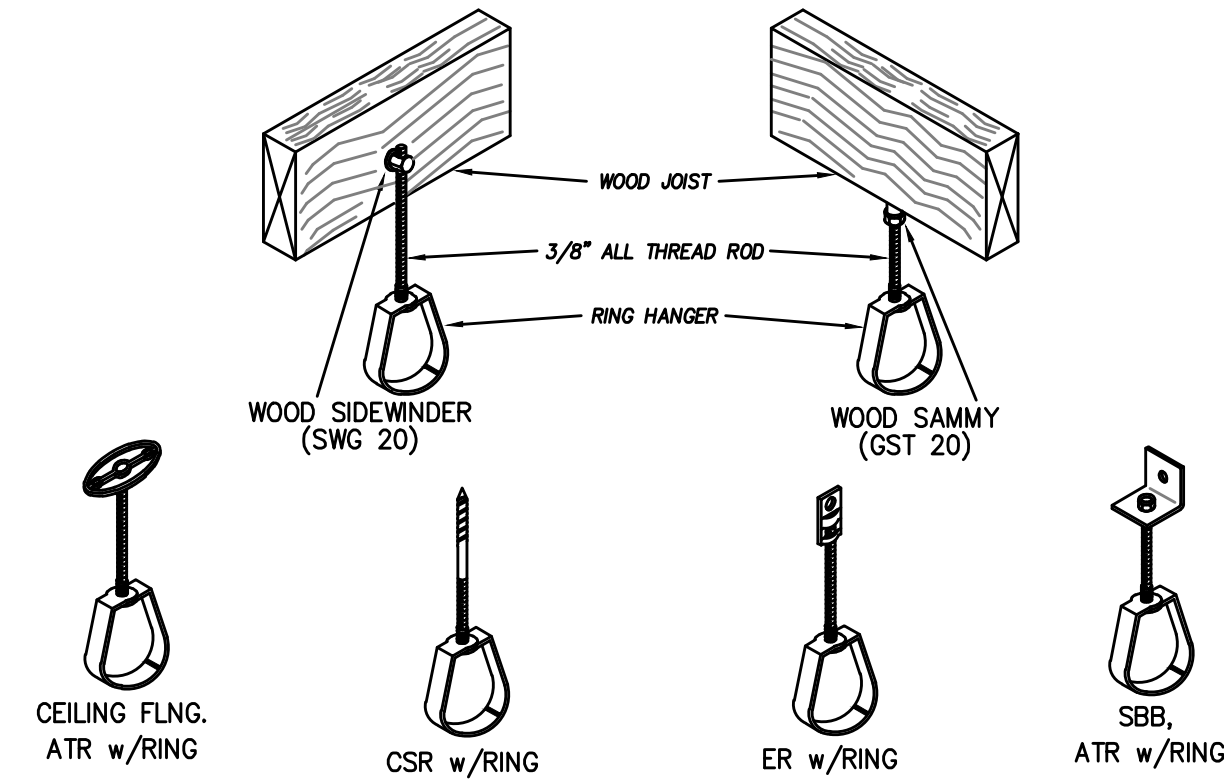


NOMINAL PIPE SIZE (IN)	3/4	1	1 1/4	1 1/2	2	2 1/2	4	6	8
STEEL PIPE	N/A	12-0	12-0	15-0	15-0	15-0	15-0	15-0	15-0
THREADED LIGHTWALL	N/A	12-0	12-0	12-0	12-0	N/A	N/A	N/A	N/A
COPPER TUBE	8-0	8-0	10-0	10-0	12-0	12-0	15-0	15-0	15-0
CPVC	5-6	6-0	6-6	7-0	8-0	9-0	N/A	N/A	N/A

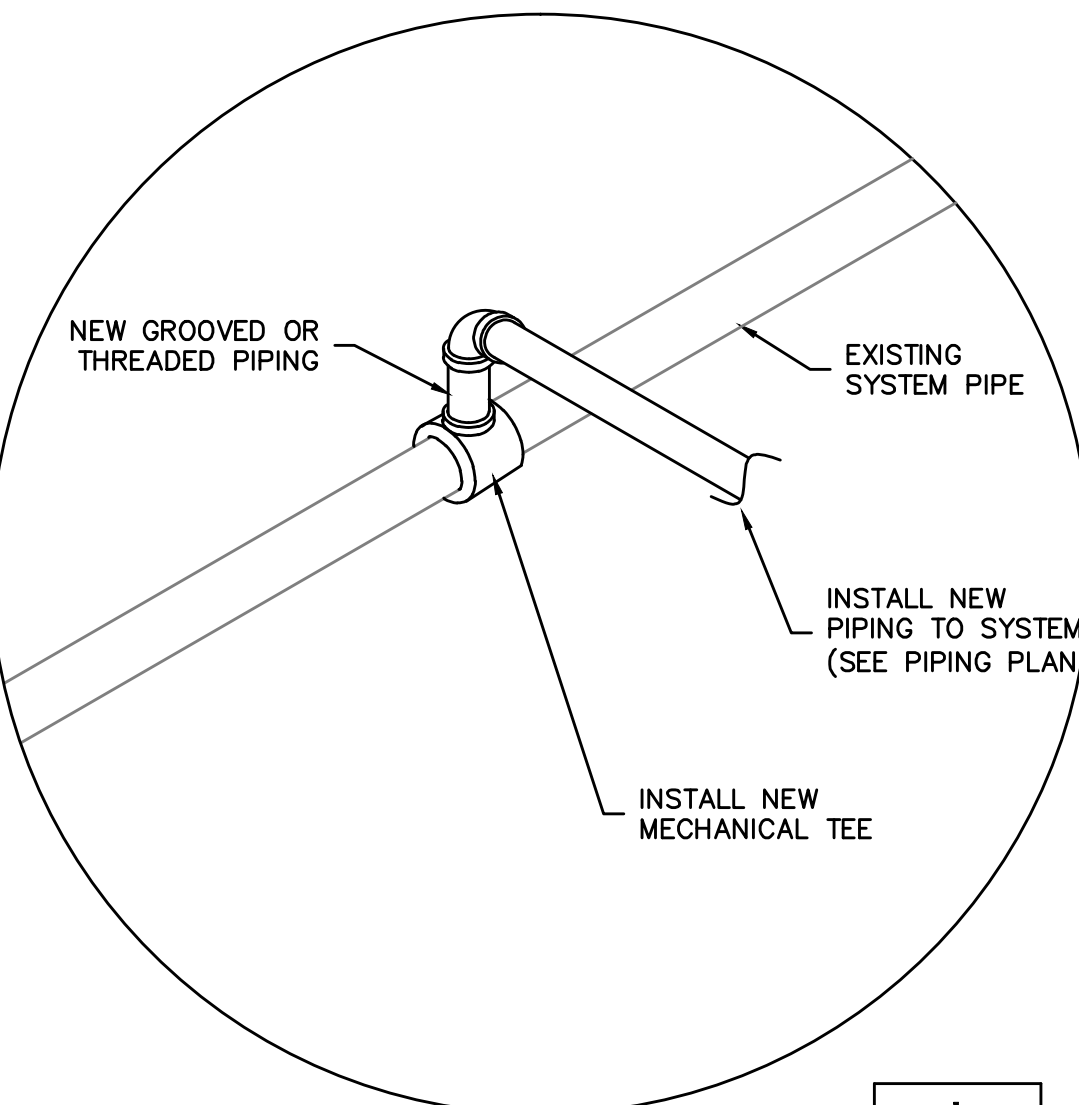


PIPE SIZE	DIA. OF ROD	PIPE SIZE	DIA. OF ROD	PIPE SIZE	DIA. OF ROD
4\"/>					

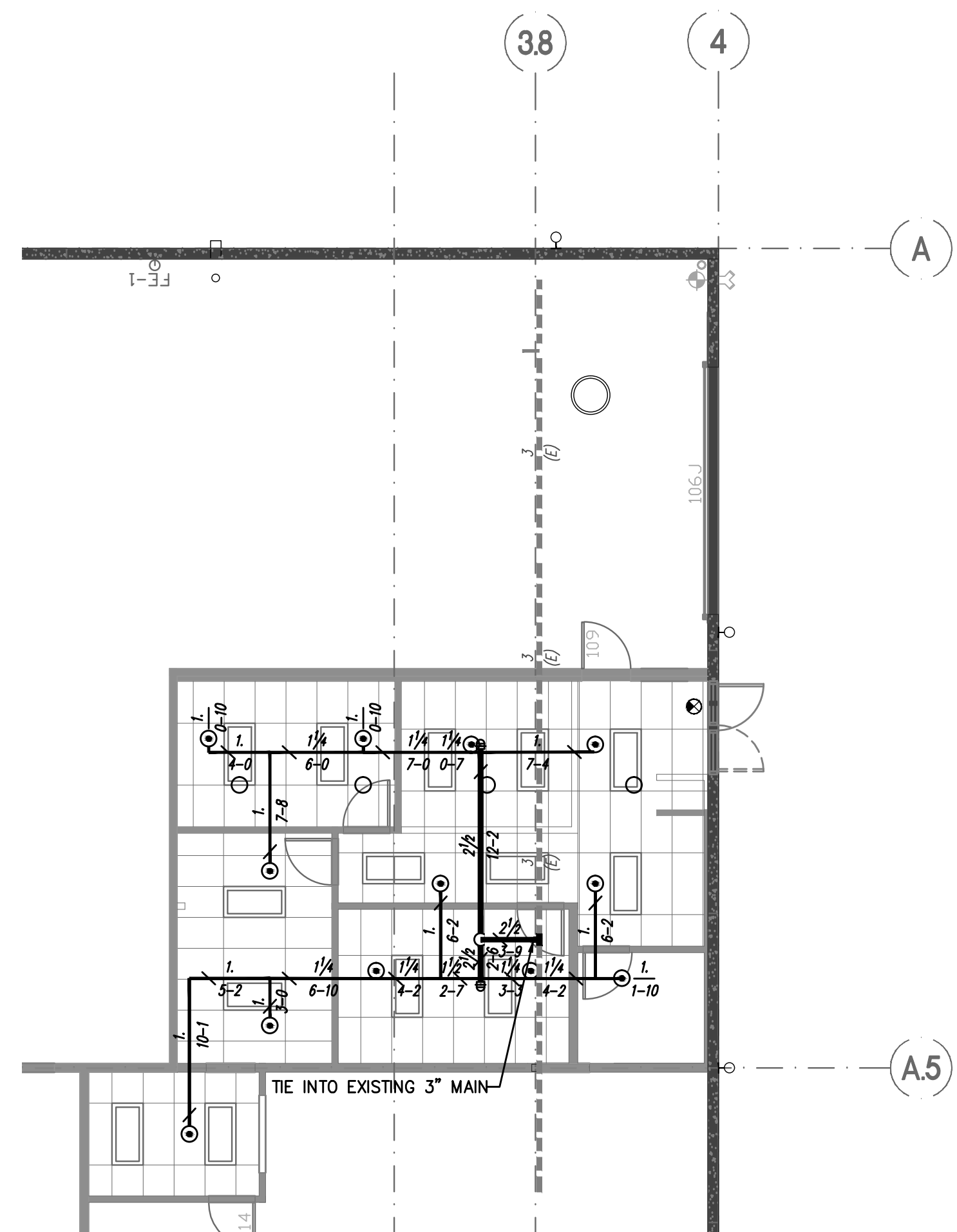


**TYPICAL WOOD TRUSS / JOIST HANGER DETAILS**

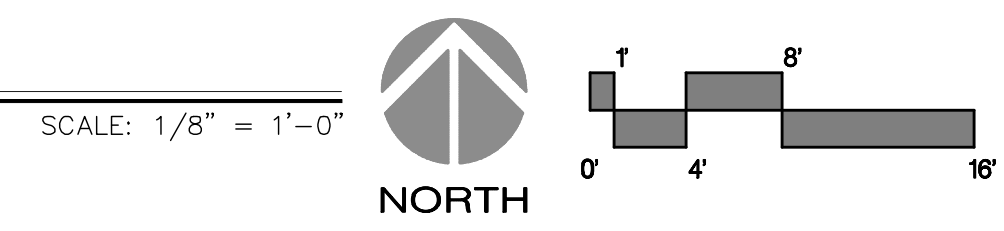
SYSTEMS PIPING WILL BE SUPPORTED WITH HANGERS IN ACCORDANCE WITH NFPA-13 AND TRUSS MANUFACTURER'S REQUIREMENTS. N.T.S.



**MECHANICAL TEE DETAIL**  
 THE CUMULATIVE HORIZONTAL LENGTH OF AN UNSUPPORTED ARM TO A SPRINKLER, SPRINKLER DROP, OR SPRING-UP SHALL NOT EXCEED 24 INCHES FOR STEEL OR 12 INCHES FOR COPPER TUBE. N.T.S.



**FIRE SPRINKLER PIPING PLAN**



**TENANT IMPROVEMENT NOTES**

- SCOPE OF WORK: INSTALL NEW 3 X 2 1/2 MECH. TEE TO FEED NEW AREA BELOW. PIPING SIZED TO MATCH EXISTING CALCULATED SYSTEM PIPING
- HEAD SPACING: ALL NEW PENDENT SPRINKLERS MAY BE SPACED AT 225 SQ. FT. MAX. OFFICE (LIGHT HAZARD) ALL NEW UPRIGHTS SPRINKLERS MAY BE SPACED AT 130 SQ. FT. MAX. UNUSED ATTIC (LIGHT HAZARD)
- PLANS MUST BE SUBMITTED AND APPROVED BEFORE WORK IS PERFORMED.
- THE SYSTEM MUST BE INSPECTED AND APPROVED BEFORE C OF O.
- THE SYSTEM DESIGN IS PER NFPA-13 AND THE CITY OF MESA.
- THE EXISTING SYSTEM IS CALCULATED FOR ORD. HAZARD II (WAREHOUSE) OCCUPANCY.

**GENERAL NOTES**

- A SUPPLY OF AT LEAST SIX SPARE SPRINKLERS (NEVER FEWER THAN SIX) SHALL BE MAINTAINED ON THE PREMISES PER NFPA 13 2007 ED. (6.2.9.2) IN ROOMS NOT EXCEEDING 100 DEGREES.
- THIS SYSTEM IS SUPERVISED BY AN APPROVED CENTRAL, PROPRIETARY OR REMOTE STATION SERVICE OR A LOCAL ALARM WHICH WILL GIVE AN AUDIBLE SIGNAL AT A CONSTANTLY ATTENDED LOCATION.
- ALL MATERIALS USED IN THE INSTALLATION OF THE RENOVATION SHALL BE NEW AND OF CURRENT ISSUE. ALL MATERIALS SHALL BE APPROVED BY U.L. (UNDERWRITERS LAB) AND BE IN CONFORMANCE WITH THE MOST CURRENT ISSUE OF THE NFPA-13 AS WELL AS THE AUTHORITY HAVING JURISDICTION.
- JOINING OF PIPES WILL BE IN ACCORDANCE WITH NFPA-13. BRANCH LINES AND NEW ARM-OVERS SHALL USE SCREWED 125# CAST IRON FITTINGS.
- SYSTEM PIPING WILL BE SUPPORTED WITH HANGERS IN ACCORDANCE WITH NFPA-13.

**SYMBOL LEGEND**

- ⊙ NEW UPRIGHT OVER PENDENT SPRINKLER
- TYPICAL EXISTING SPRINKLER (SEE SPRINKLER LEGEND BELOW)
- /— NEW PIPING, CUT ON THE JOB
- - - EXISTING PIPING
- (E) EXISTING

These plans were prepared by:

**FIRE PROTECTION ENGINEERING SERVICES**  
 4242 W. Topeka Dr., Glendale, AZ 85308  
 (623) 587-1844 Fax: (623) 587-7992

The standard of care for all professional services performed or furnished by Fire Protection Engineering Services under this Agreement will be the skill and care used by members of the Fire Protection profession practicing under similar circumstances at the same time and in the same locality. Fire Protection Engineering Services makes no warranties, expressed or implied, under this Agreement or otherwise, in connection with Fire Protection Services. Copyright © by Fire Protection Engineering Services the contents of this drawing shall not be altered or reproduced without the written permission of Fire Protection Engineering Services.

**APPROVAL STAMP**

SYMBOL	MODEL	K-FAC	THREAD	RATING	DESCRIPTION	FINISH	QTY.
⊙	VKING SIN VK300	5.6	1/2"	200'	QR UPRIGHT	BRASS	12
○	VKING SIN VK302	5.6	1/2"	155'	QR PENDENT w/ 2 PC. REC. ESC.	CHROME	12
<b>TOTAL THIS SHEET =</b>							<b>24</b>

OFFICE WAREHOUSE TENANT IMPROVEMENT  
 4719 EAST INGRAM STREET MESA, ARIZONA  
**FOENIX PROPERTIES, INC.**  
 1806 N. LINDSAY ROAD  
 MESA, ARIZONA 85213

Job No.	1220
Drawn	RD
Checked	KIS
Date	07-12-12
Revised	

**PERMIT SET**

**HDA ARCHITECTS, LLC.**  
 459 N. Gilbert Road, Suite C-200, GILBERT, AZ 85234  
 TEL: (480) 539 8800 FAX: (480) 539 8608  
**FIRST FLOOR FIRE SPRINKLER PLAN**

**HDA**  
 HDA ARCHITECTS, LLC.

Sheet No.  
**FP101**