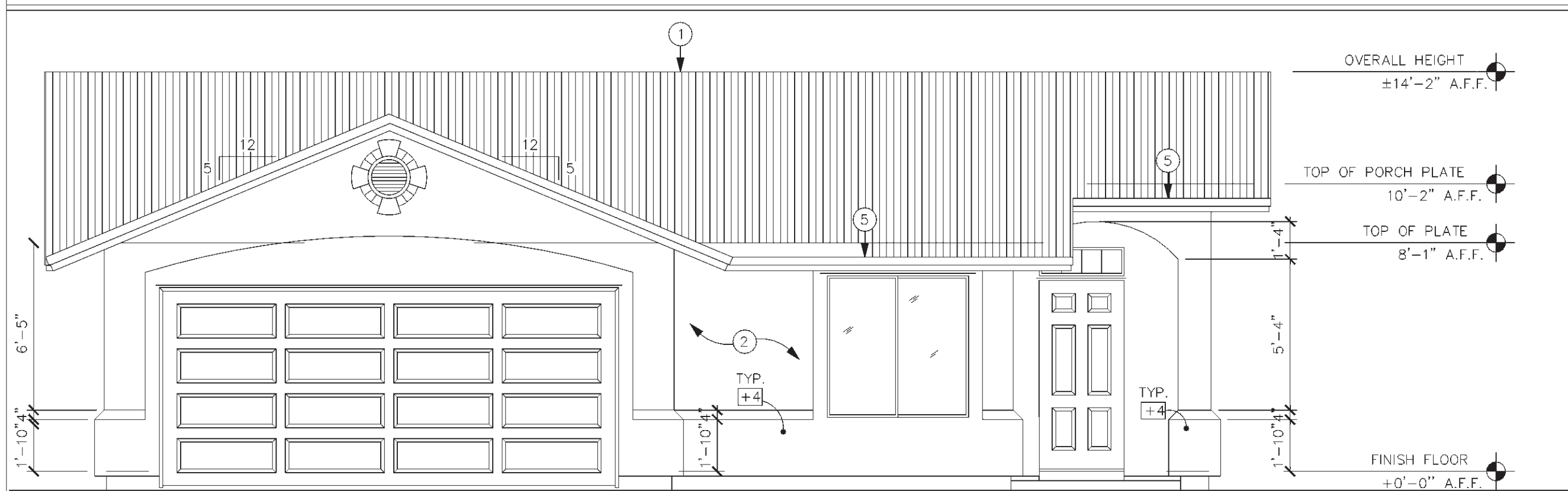
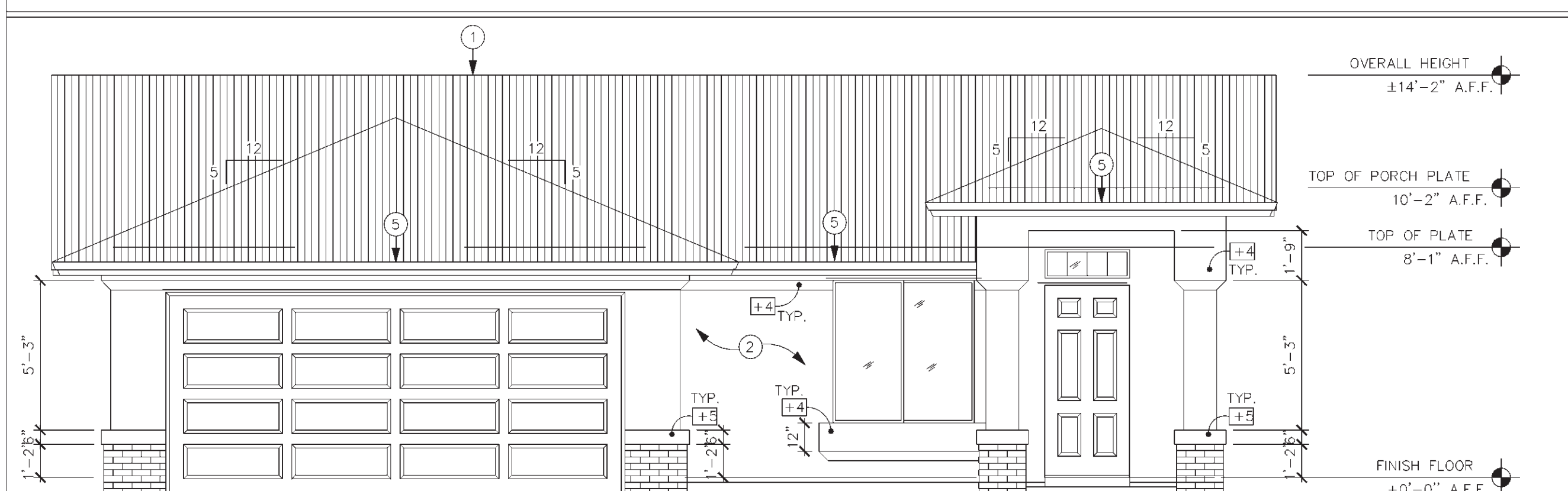


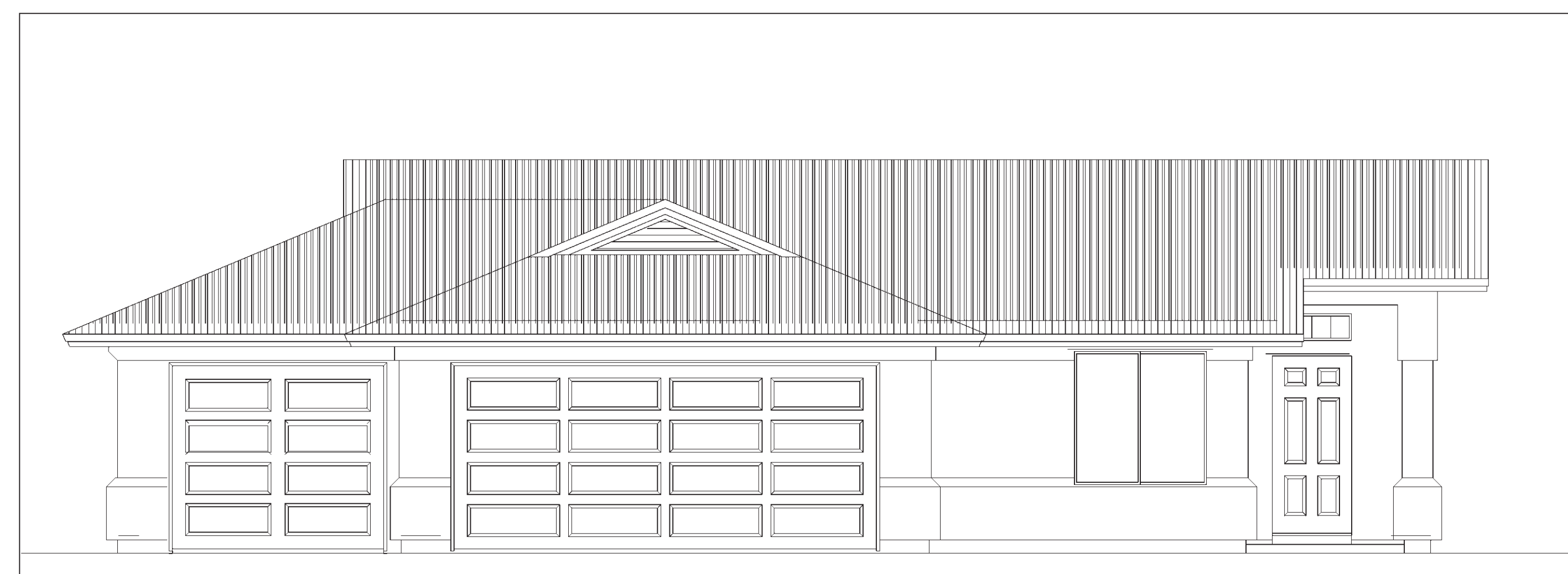
**FRONT ELEVATION A**  
SCALE: 1/4" = 1'-0"



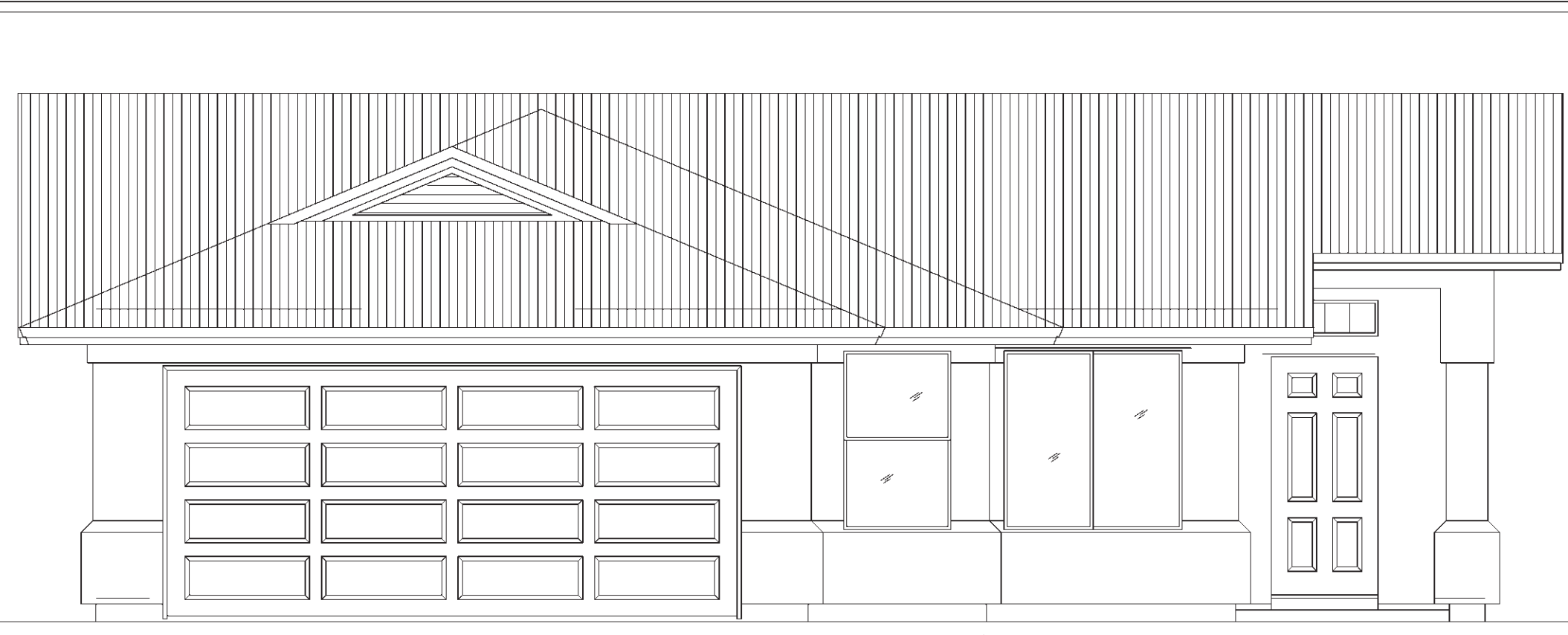
**FRONT ELEVATION B**  
SCALE: 1/4" = 1'-0"



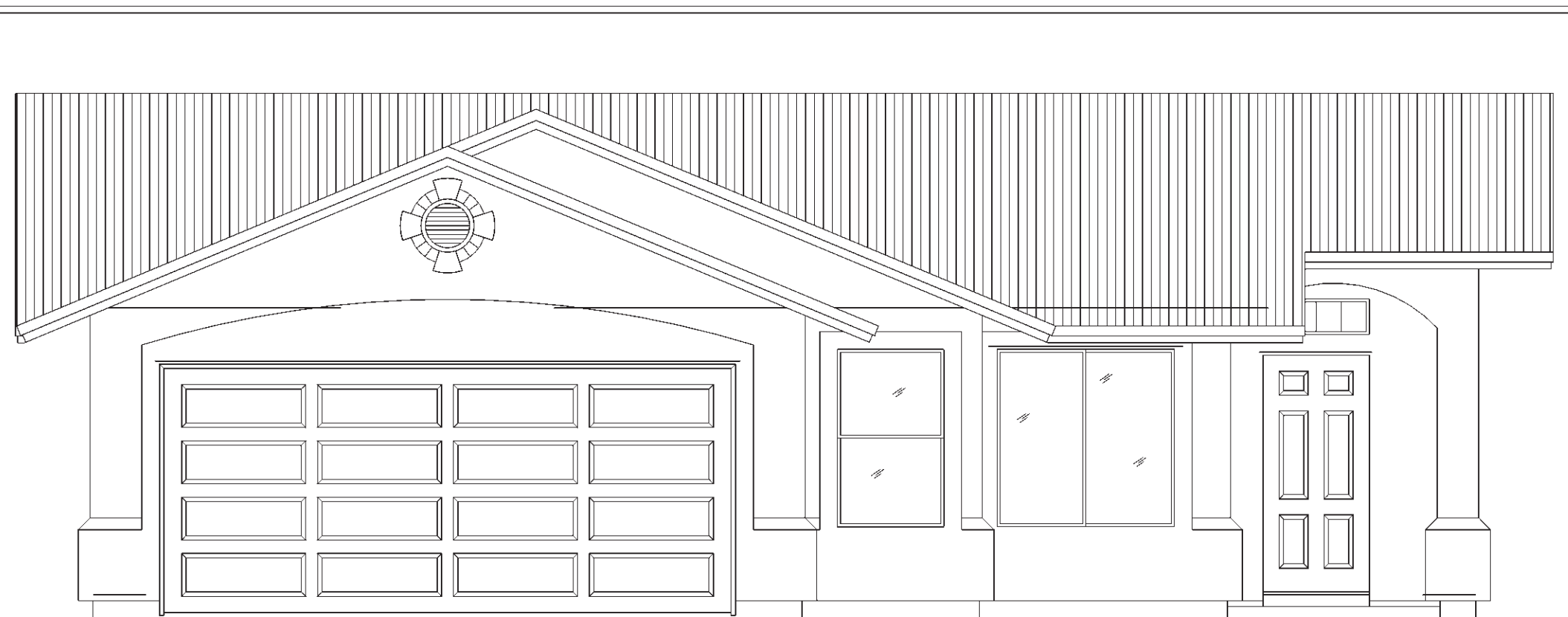
**FRONT ELEVATION C w/ HIP ROOF**  
SCALE: 1/4" = 1'-0"



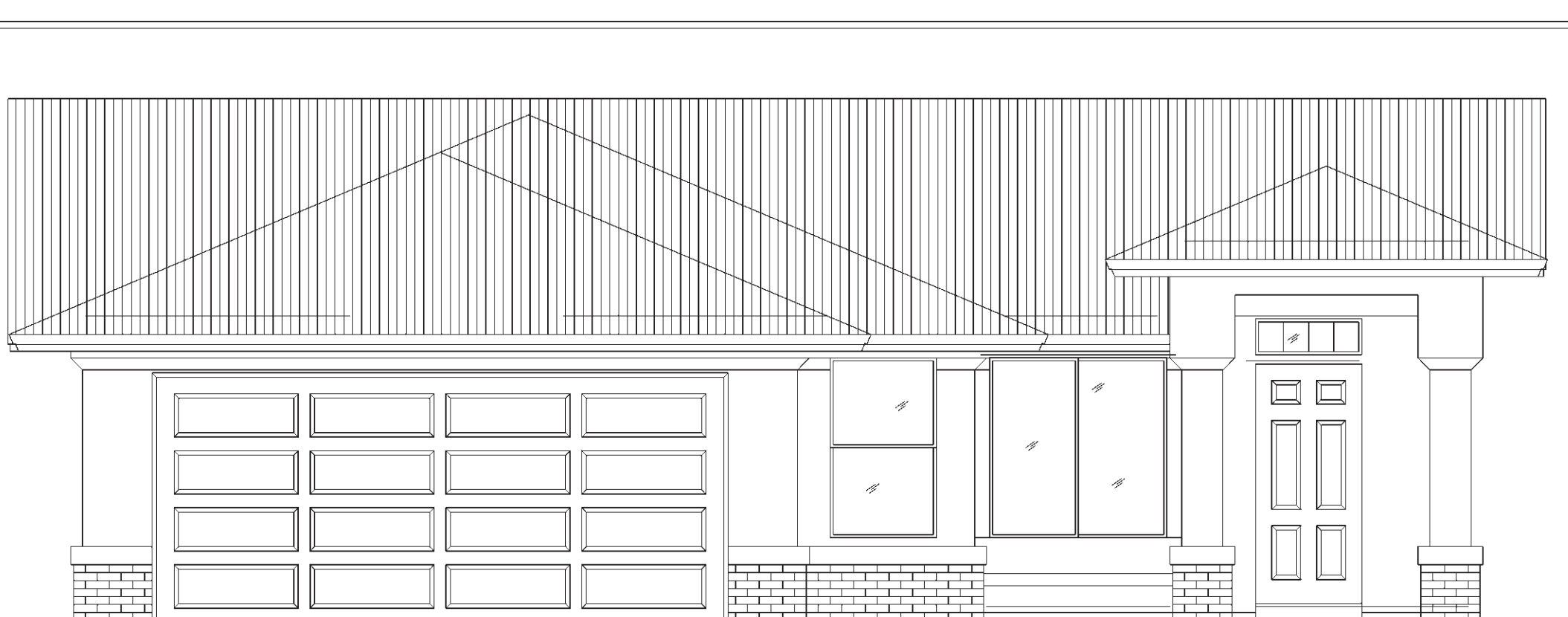
**3-CAR GARAGE @ ELEV. A**  
SCALE: 1/4" = 1'-0"



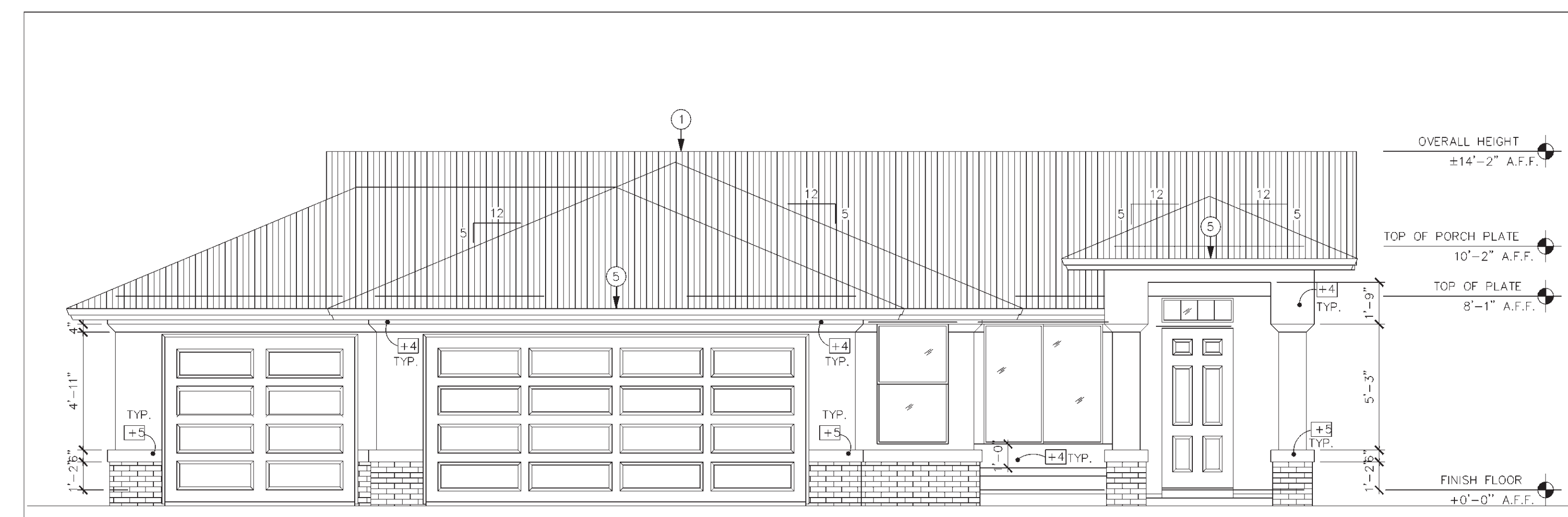
**FRONT ELEVATION A w/ STORAGE**  
SCALE: 1/4" = 1'-0"



**FRONT ELEVATION B w/ STORAGE**  
SCALE: 1/4" = 1'-0"



**FRONT ELEVATION C w/ STORAGE**  
SCALE: 1/4" = 1'-0"



**3-CAR GARAGE W/ EXT. STORAGE @ ELEV. C**  
SCALE: 1/4" = 1'-0"

**GENERAL INFORMATION**

- WESTERN ONE-KOTE STUCCO WALL FINISH (I.C.B.O. #3899) o/ RESISTIVE BARRIER OF TYPE 15 ASPHALT-SATURATED RAG FELT
- FLASHING OF EXTERIOR OPENINGS SHALL NOT BE NOT LESS THAN # 26 GA CORROSION RESISTANT METAL & PER U.B.C SEC. 1710(b)
- WEEP SCREED SHALL BE OF NO. 26 GAUGE CORROSION RESISTANT METAL WITH A MIN. VERT. ATTACHMENT FLANGE OF 3 1/2" AND PLACED A MIN OF 3/4" BELOW FOUND. PLATE AND MIN. 6" A.F.G. @ ALL EXTERIOR WALLS
- CONCRETE TILE ROOF'S INSTALLED PER MONIER'S SPEC.'S & I.C.B.O. #2093
- BUILT UP ROOFING w/ 3 LAYERS 15# FELT & 30# PER SQ. FT. OF GRAVEL OR OTHER APPROVED SURFACING MATERIAL. INSTALLED PER MFG. SPEC. & '94 U.S.C. SEC. 3203(d)2
- TYP. HDR. HEIGHT @ ALL 8'-1" PLATE IS 6'-8" - U.N.D.
- SEE SHT. A2 FOR COINCIDING WINDOW INFORMATION
- SEE DOOR SCHEDULE ON SHT. A2 FOR COINCIDING DOOR INFORMATION

**KEYNOTES**

No.	DESCRIPTION
1	MONIER SADDLEBACK TAUPE CONCRETE TILE (I.C.B.O. #2093) o/ 30# FELT PAPER
2	WESTERN ONE-KOTE STUCCO SYSTEM (I.C.B.O. #3899) o/ FOAM BD. (ON AIS BOARD @ ATTIC AREAS)
3	PARAPET HEIGHT MAY VARY - SEE TYP. DETAIL
4	2x6 BARGE w/ 1x4 TRIM
5	2x6 FASCIA w/ 1x4 TRIM
6	POP-OUT - SEE TYP. DETAILS
7	CEILING LINE
8	FINISHED FLOOR LINE
9	BEAM SEE FLOOR PLAN OR ROOF PLAN FOR SIZE
10	POST SEE FLOOR PLAN OR ROOF PLAN FOR SIZE
11	SEE SHEET A3 OR A3.1 FOR VENT SIZE AND ATTIC VENTILATION CALCULATIONS
12	14"x8" SCREENED VENTS @ WITHIN 12" OF CEILING & 12" OF FLOOR WITH GAS APPLIANCES IN GARAGE.
13	BRICK OR SYNTHETIC STONE VENEER
14	OPTIONAL COVERED PATIO
15	OPTIONAL BAY
16	OPTIONAL DOOR
17	CHIMNEY w/ OPTIONAL FIREPLACE

REPUBLIC HOMES, L.L.C.  
1008 S. DOBSON ROAD, SUITE 100  
MESA, AZ 85202  
(480) 775-7273 FAX (480) 775-1859H.

The Tektone Company  
Architectural Drafting Services  
8221 E. Corabell Cir., Mesa, AZ 85208  
PH. (602) 357-1858 FAX (602) 357-1859H.

ELEVATIONS  
SHEET CONTENT:

PROJECT NO.: RH99-0504  
DRAWN BY: STEVE PREUSS  
DATE: 12 SEPT. 99  
REVISIONS  
Rev. DATE:  
1  
2  
3  
4

PLAN  
1529

SHEET  
A-4