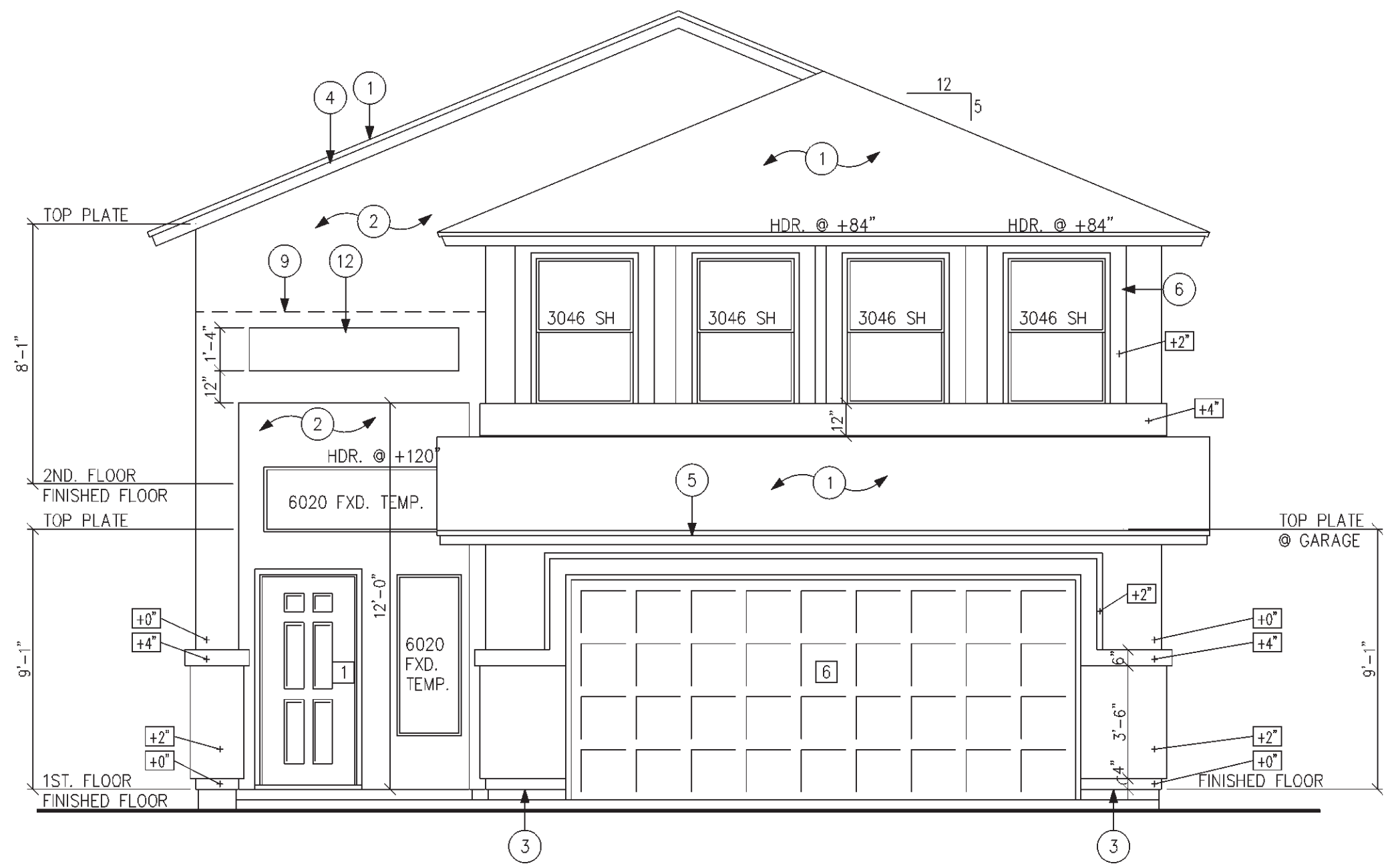
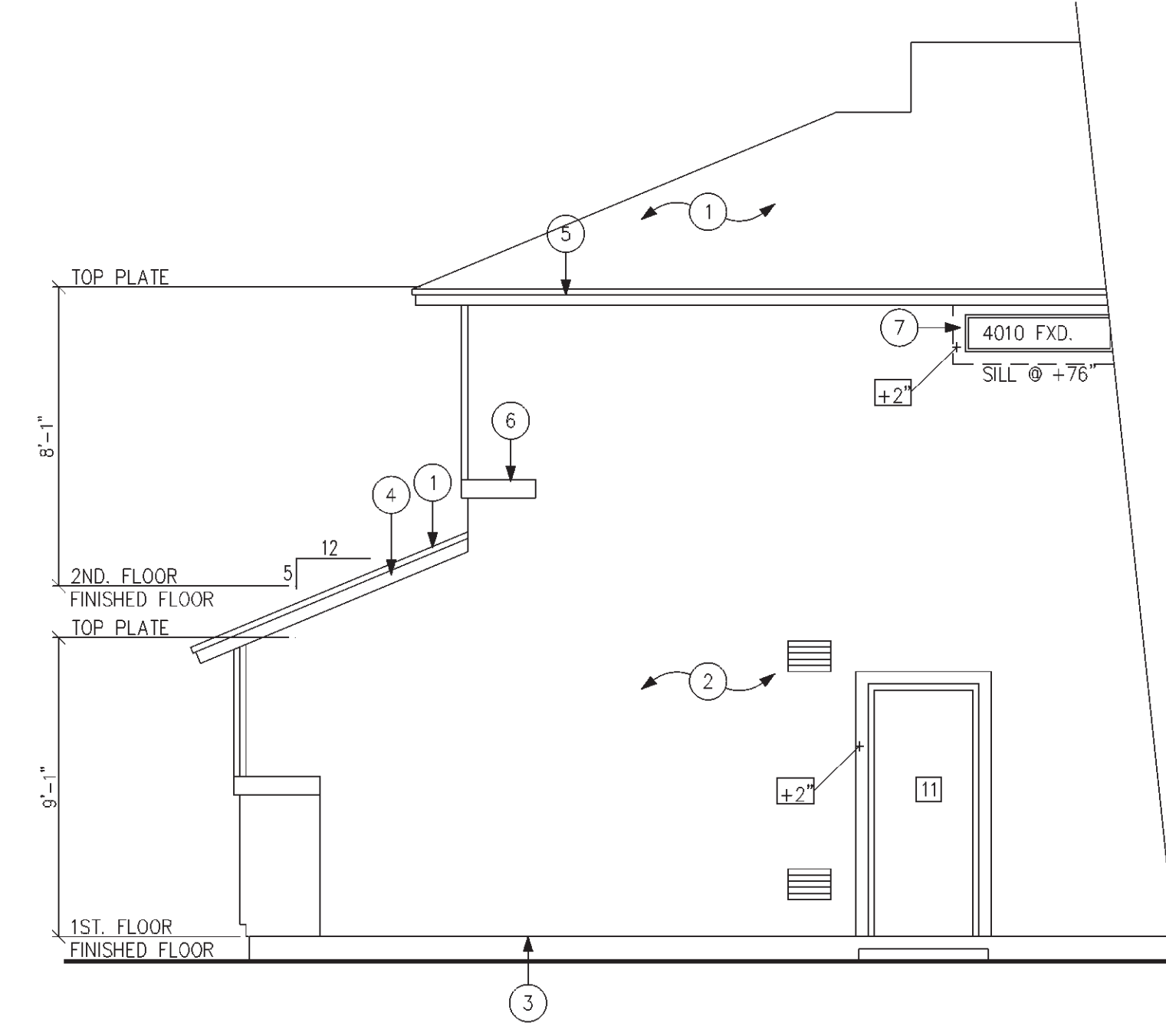


LEFT SIDE ELEVATION 'B'  
SCALE: 1/4" = 1'-0"

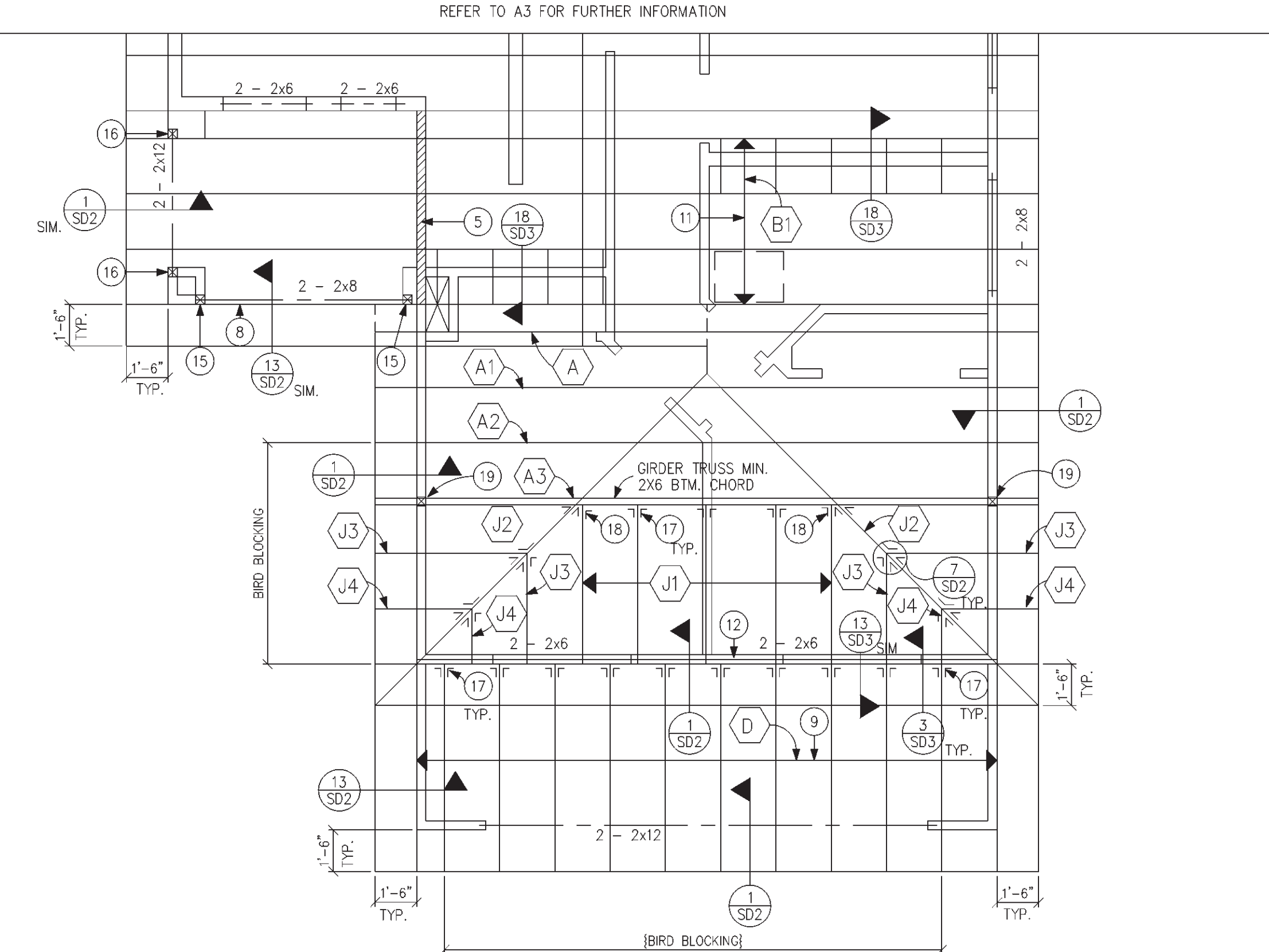


FRONT ELEVATION 'B'  
SCALE: 1/4" = 1'-0"



RIGHT SIDE ELEVATION 'B'  
SCALE: 1/4" = 1'-0"

KEYNOTES	
GENERAL INFORMATION	
1.	WESTERN ONE-KOTE STUCCO WALL FINISH (I.C.B.O. #3899) o/ RESISTIVE BARRIER OF TYPE 15 ASPHALT-SATURATED RAG FELT.
2.	FLASHING OF EXTERIOR OPENINGS SHALL NOT BE NOT LESS THAN # 26 GA. CORROSION RESISTANT METAL & PER U.B.C. SEC. 709.4.2
3.	WEEP SCREED SHALL BE OF NO. 26 GAUGE CORROSION RESISTANT METAL WITH A MIN. VERT. ATTACHMENT FLANGE OF 3 1/2" AND PLACED A MIN OF 3/4" BELOW FOUND. PLATE AND MIN. 6" A.F.G. @ ALL EXTERIOR WALLS.
4.	CONCRETE TILE ROOFS INSTALLED PER MONIER'S SPEC.'S & I.C.B.O. #2093
5.	BUILT UP ROOFING w/ 3 LAYERS 15# FELT & 30# PER SQ. FT. OF GRAVEL OR OTHER APPROVED SURFACING MATERIAL INSTALLED PER MFG. SPEC. & U.B.C. SEC. 1503
	☐ = SEE DOOR SCHEDULE ON SHT. A1 FOR COINCIDING DOOR INFO.
No.	DESCRIPTION
1	CONCRETE TILE - I.C.B.O. #2093 o/ 303 FELT
2	WESTERN 1-KOTE STUCCO SYSTEM (I.C.B.O. #3899) o/ FOAM BD. (ON AIS BOARD @ ATTIC AREAS)
3	WEEP SCREED - MIN 4" ABOVE GRADE OR 2" ABOVE CONCRETE
4	2x8 BARGE w/ 1x4 TRIMMER - SEE TYPICAL DETAIL #3 ON SHEET A3
5	2x8 FASCIA w/ 1x4 TRIMMER - SEE TYPICAL DETAIL #3 ON SHEET A3
6	RETURN POP-OUT 24"
7	NOT USED
8	2 - 2x6 ABOVE EA. 16" SQ. OPENING
9	LINE OF INTERIOR CEILING
10	OPT. CHIMNEY
11	NOT USED
12	16" x 6'-6" OPENING
13	2x6 POP-OUT
14	2x6 RAFTERS @ 24" O.C.
15	2 - 2x4 POSTS
16	3 - 2x4 POSTS
17	SIMPSON LU26 TYPICAL
18	SIMPSON LTHJL
19	2 - 2x4 POST FROM GIRDER TRUSS TO BTM. PLATE OF SECOND FLOOR. 2 - 2x4 POST FROM TOP PLATE OF FIRST FLOOR TO SILL PLATE.



ROOF FRAMING PLAN 'B'  
SCALE: 1/4" = 1'-0"

WINDAMERE HOMES  
5855 E. MCDOWELL RD.  
MESA, AZ 85215

ELEVATION "B"

REL. DATE:	5-24-99
Rev.	DATE:
1	
2	
3	
4	
5	
6	

PLAN #  
3008

SHEET No.  
A4.1  
7 OF 14